

Animated by: **F.Ramirez**



GEISMAR®

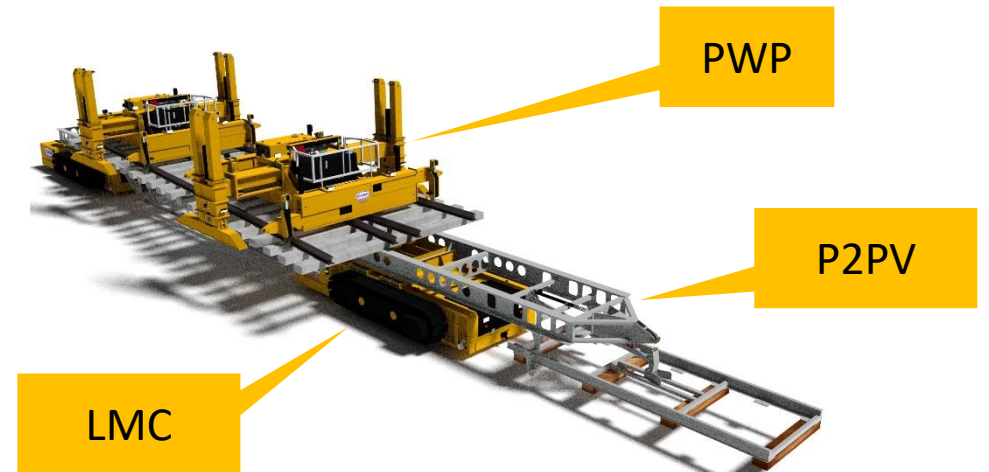
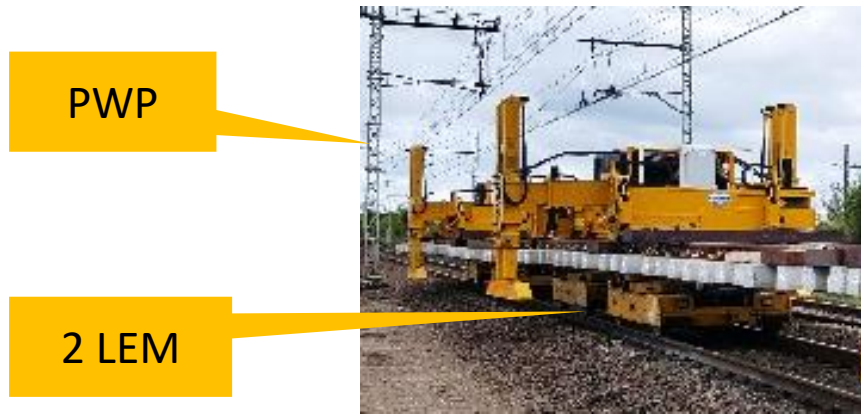
PWP
METHOD

PEM/LEM: latest evolutions

Well-known system: more than 400 units over the world

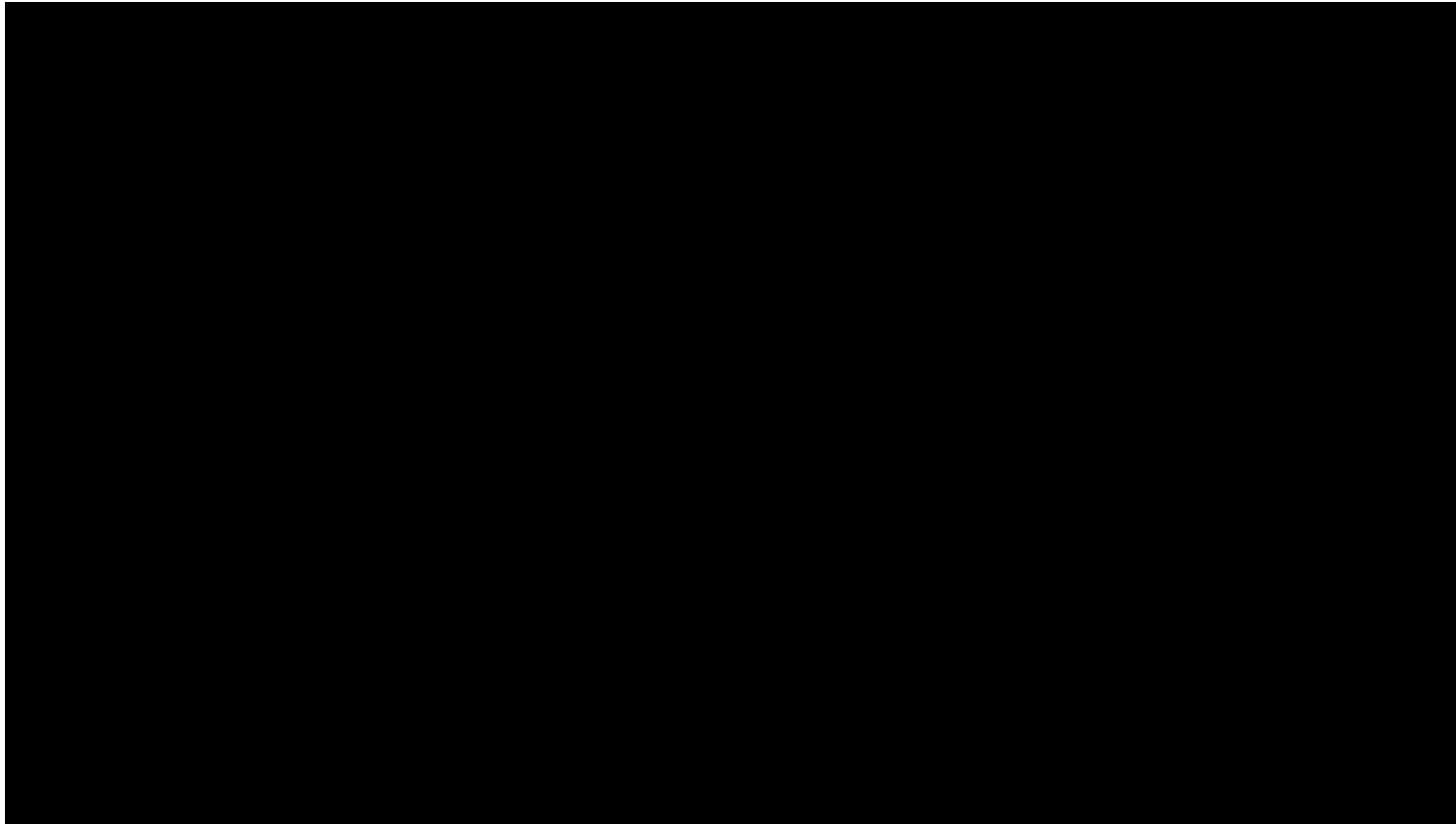
- PWP, which are the latest evolution of PEM, can also be used with LEM or by their own.

PWP description in chapter 4



PEM/LEM method, with PWP

Video PWP on site (3:36)



PWP: the all-in-one solution to unload and install S&C

The « traditional » method for S&C laying needs:

- To **dismount S&C components** already assembled in the S&C factory
- A **storage area** close to the worksite
- To **re-assemble S&C** close to the pit



Solution:

- Bring assembled panels of S&C (up to ~25 m-length) close to the pit, with Tilting wagons.
- Unload tilting wagons and install S&C in the pit, with laying gantries model PWP

Laying gantry model PWP



Laying gantries suitable both for:

- Unloading/loading Tilting wagons
- S&C laying

- 4 adjustable clamps
- Transversal and longitudinal load slewing increased
- Fitted with auxiliary feet and stable lifting feet
- Loading capacity 20 tons
- Weight 10 tons
- Feet span up to 6100 mm

Laying gantry model PWP

Convenient



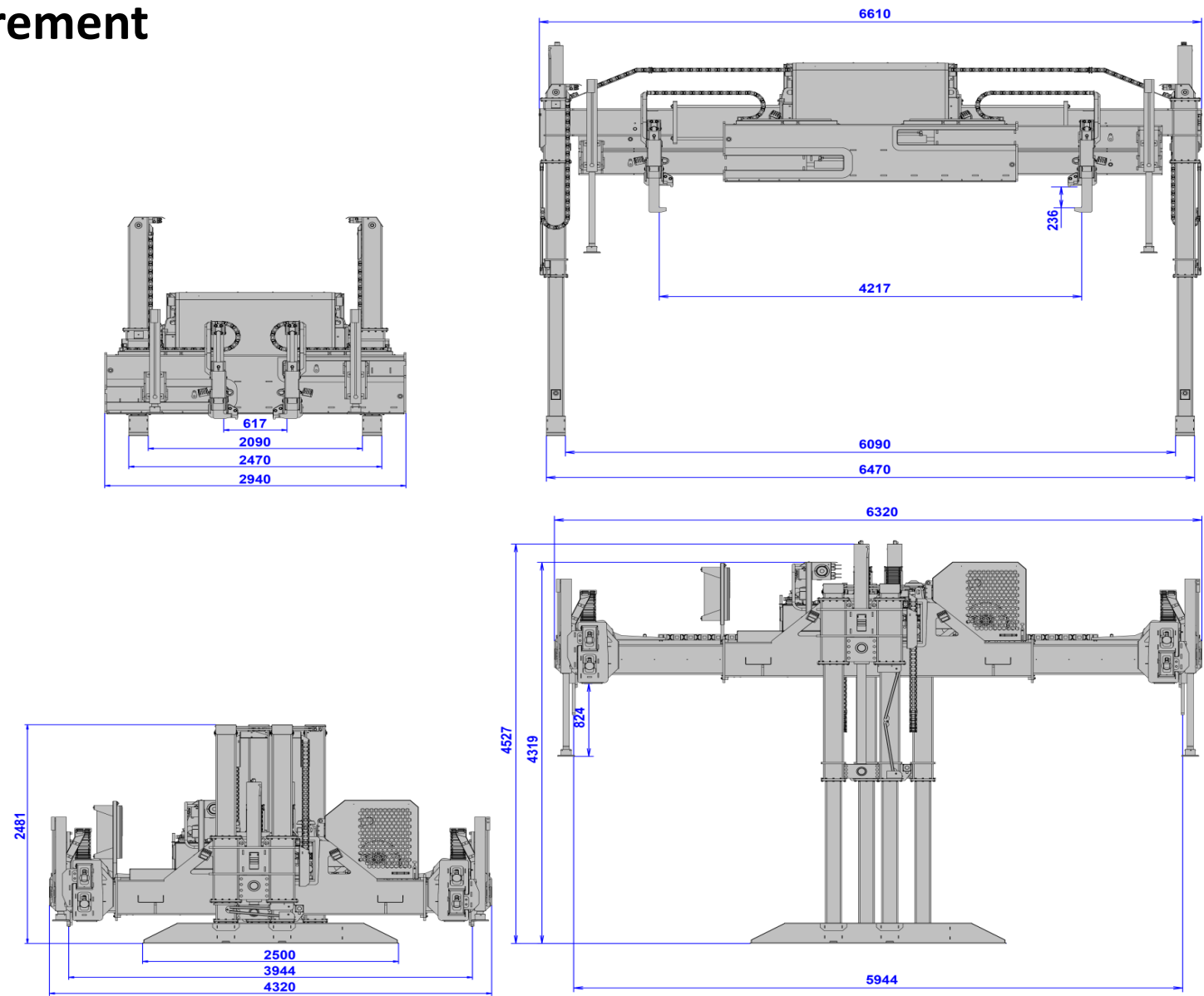
- Precise positioning
- Autonomous
- Transportation on a standard wagon or truck (Road routing possible)
- Limited on-site space required
- Long slewing distance
- Modularity

PWP : technicals characteristics

Performances	Maximal loading (CMU)	20 000 kg
	Lifting stroke	2 700 mm
	Lateral slewing stroke	2 000 mm
	Longitudinal slewing stroke	1 000 mm
	Maximum opening feet (inside)	6 000 mm
	Lateral clamps stroke	1 800 mm
	Small feet stroke	830 mm

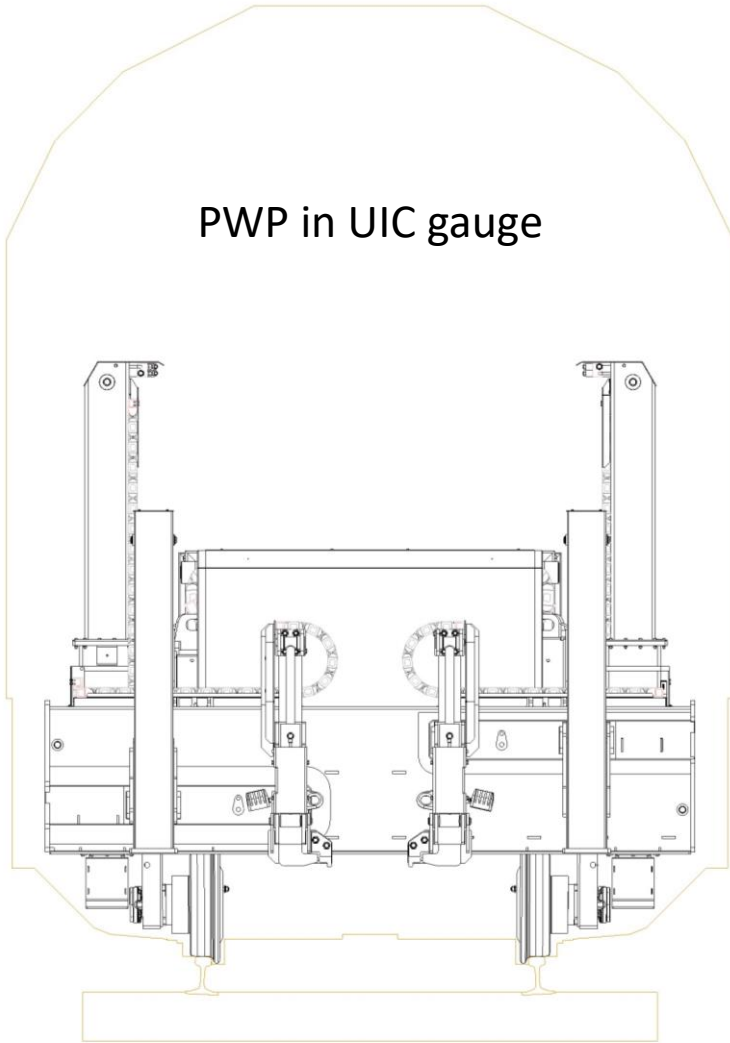
Radiocommande	1 remote control for 2 PWP (possibility extension to 4)	
Engine	type	KDI 1903 TCR
	power	42 kW (57 HP) à 2600 tr/min
	Carburant	Diesel
	Cylinder	1861 cm3
	Tank capacity	120 liters
	Hydraulic pump	Cylinder 51 cm3
		flow 132 l/min à 2600 t/min
		Work pressur 160 bars
	Pompe hydraulique manuelle de secours Cylinder 25 cm3	
	Hydraulic tank capacity 150 liters	

PWP : encombrement



PWP: option rail wheels (maximum speed on rail 5 km/h)

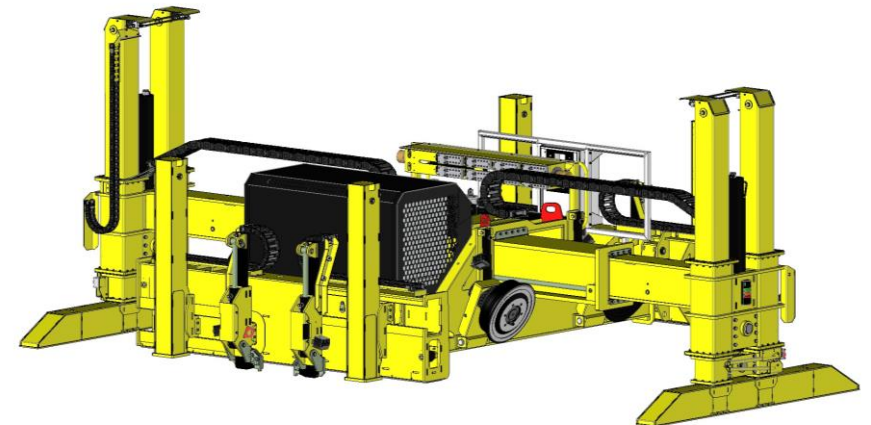
PWP in UIC gauge



PWP on rail wheels



PWP work position



Laying gantry model PWP

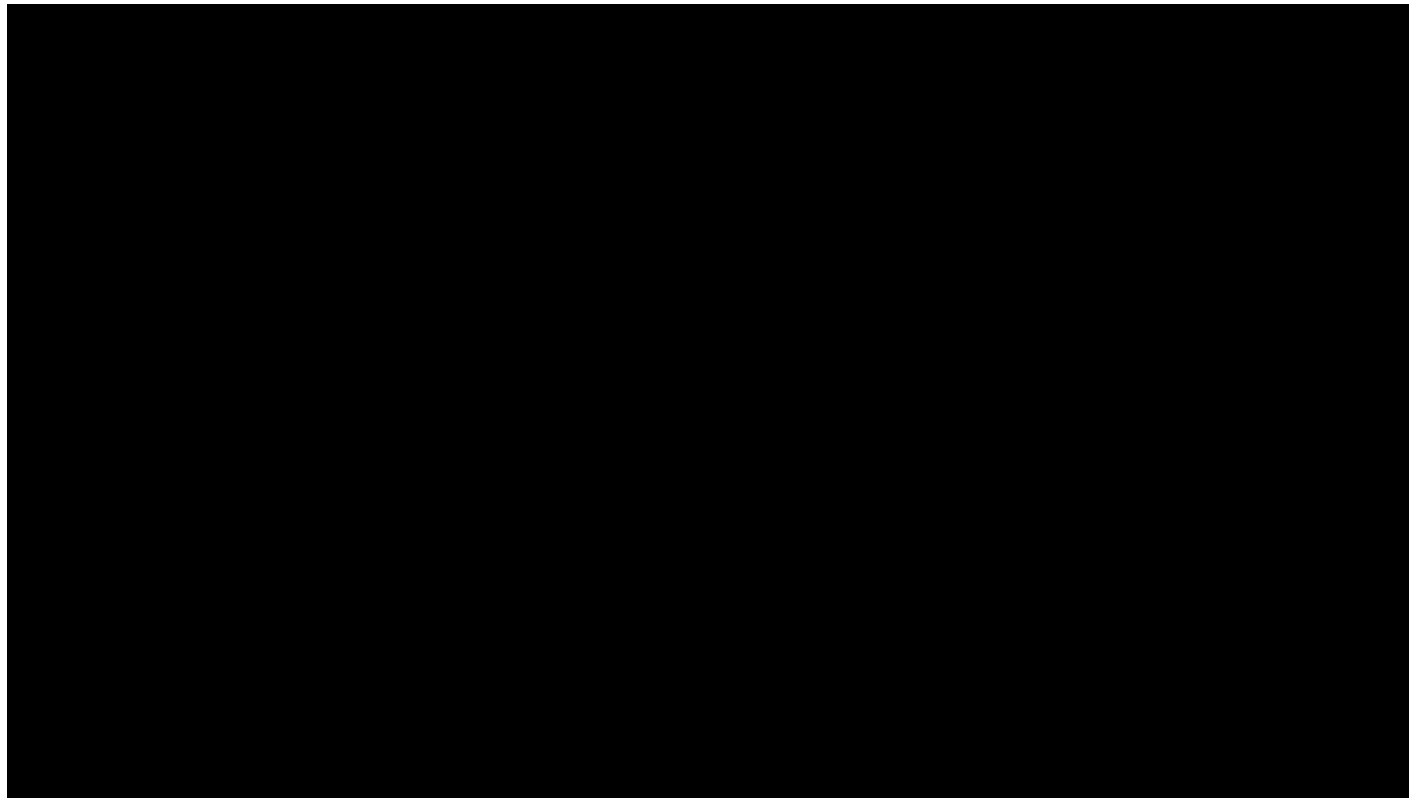
And Safe



- No pendulum
- Centered load
- Radio controlled movements
- Clamps under rail foot
- No tipping hazard

All-in-one solution to transport and install S&C

Video WPA + PWP (2:47)



Tilting wagons and PWP



We have the product you need

S&C laying systems

PEM / LEM



- Longitudinal laying with temporary track
- Modular method
- No S&C length limitation (up to 16 PEM used simultaneously)
- Limited transversal stroke

S2PV / SPAC



- No need of temporary track (lorries fitted with caterpillars)
- Telescopic feet
- Up to 42 m-long S&C

PWP-WPA



PWP at the fair

- Autonomous loading/unloading
- Increased transversal and longitudinal slewing distance
- PWP can be used either with LEM, LMC or WPA



GEISMAR®

Thanks for your attention

- Additional support available on demand -