

# CHAPTER 7 – SPARE PARTS CATALOG

## 7.1 Drawings and parts lists



**IMPORTANT**

Afin que votre commande de pièces de rechange soit suivie d'une livraison prompte et correcte, bien indiquer :

- Le rep., le nombre et la désignation des pièces de rechange
- Le type et le n° de série de la machine (plaque sur le châssis)

\*\*\*\*\*

**IMPORTANT**

To ensure that you are delivered promptly and correctly after placing an order for spare parts please state:

- the Reference, number and description of the spare parts
- the type and serial number of the machine (to locate this number, look at the plate on the chassis)

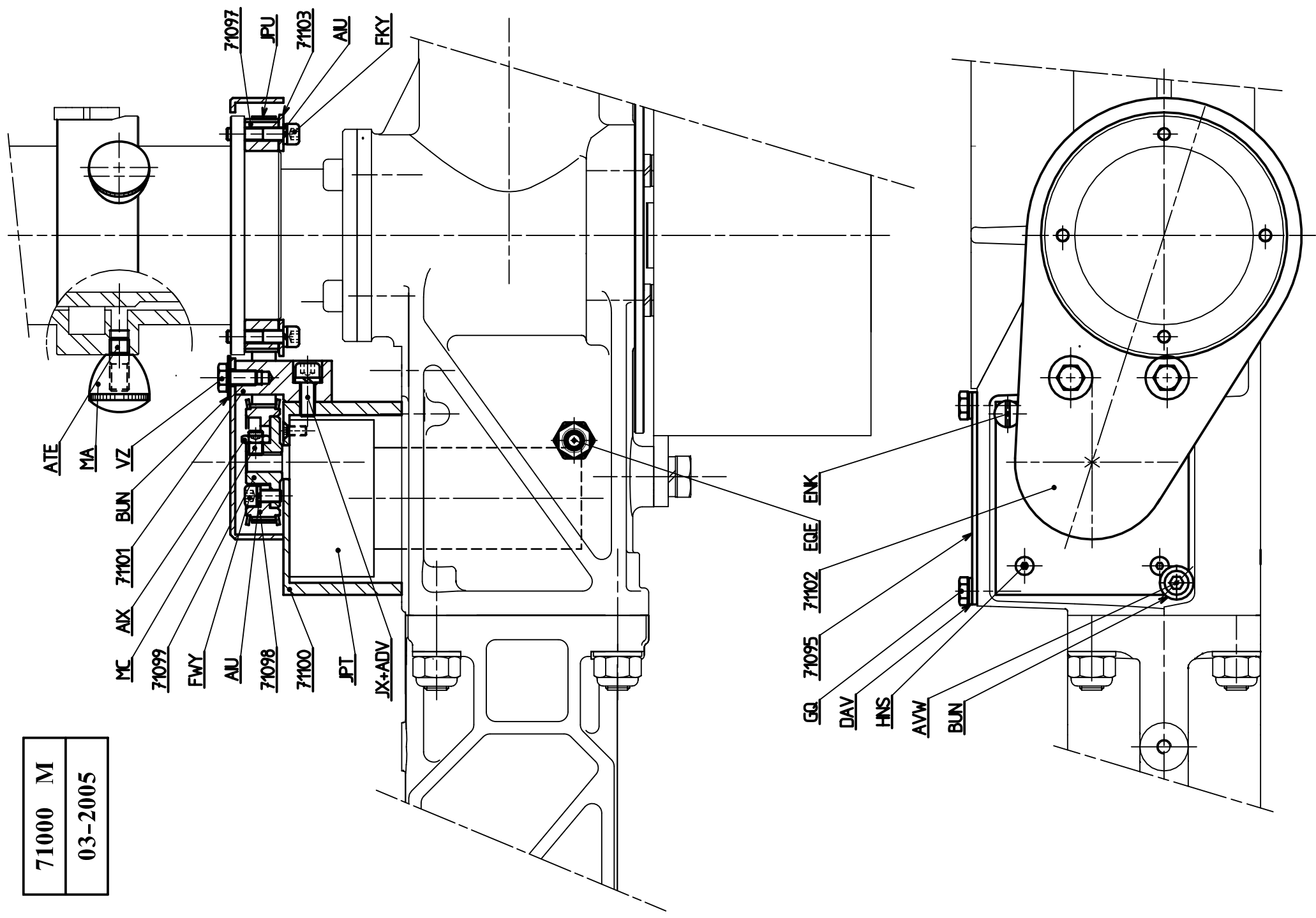
\*\*\*\*\*

**WICHTIG**

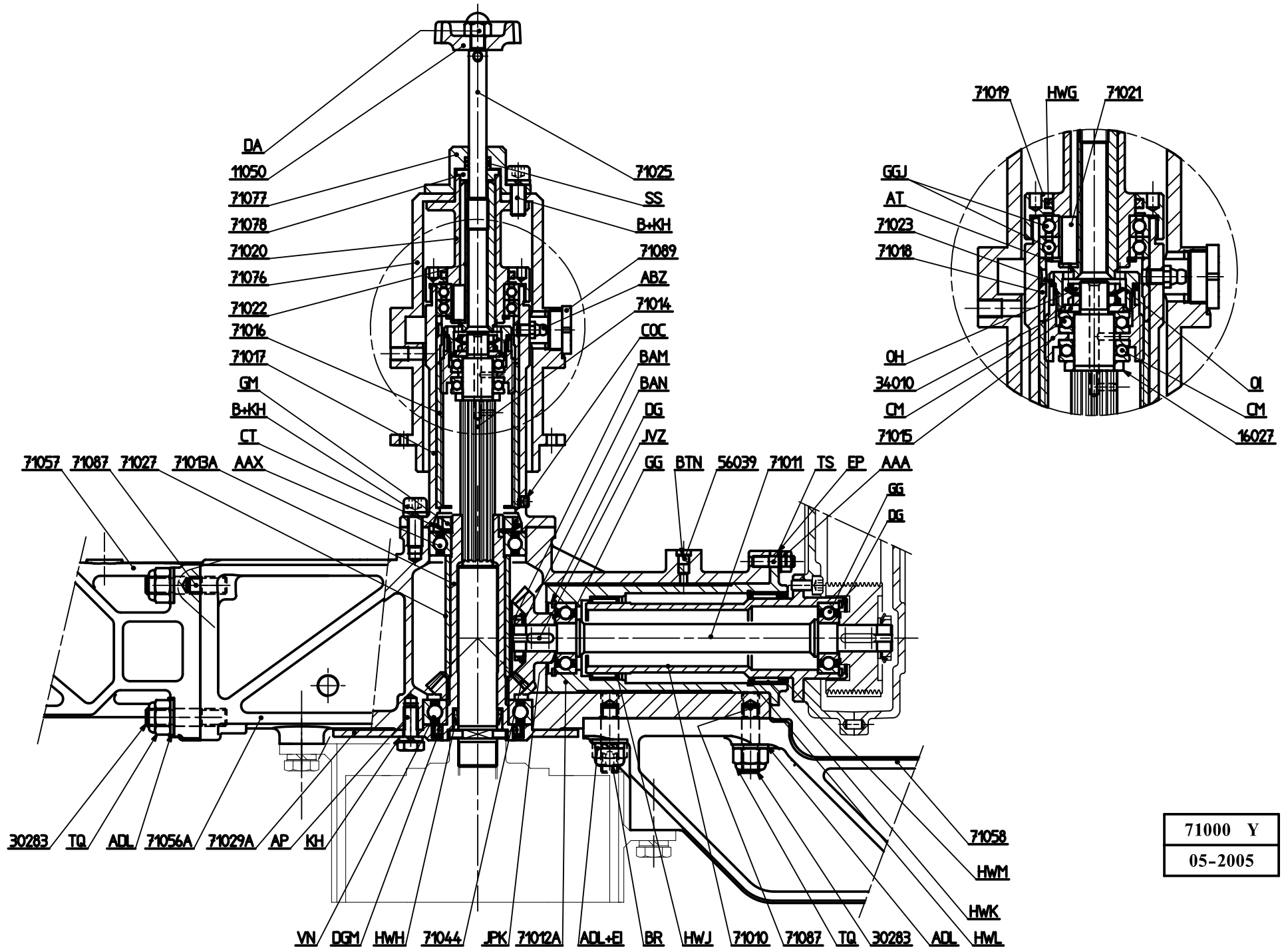
Um uns eine schnelle und fehlerlose Erledigung Ihres Ersatzteil-Auftrages zu erlauben, bitten wir Sie um folgende Angaben :

- Seriennummer und Baujahr der maschine
- Benennung und Bestellnummer der Ersatzteile

71000 M
03-2005



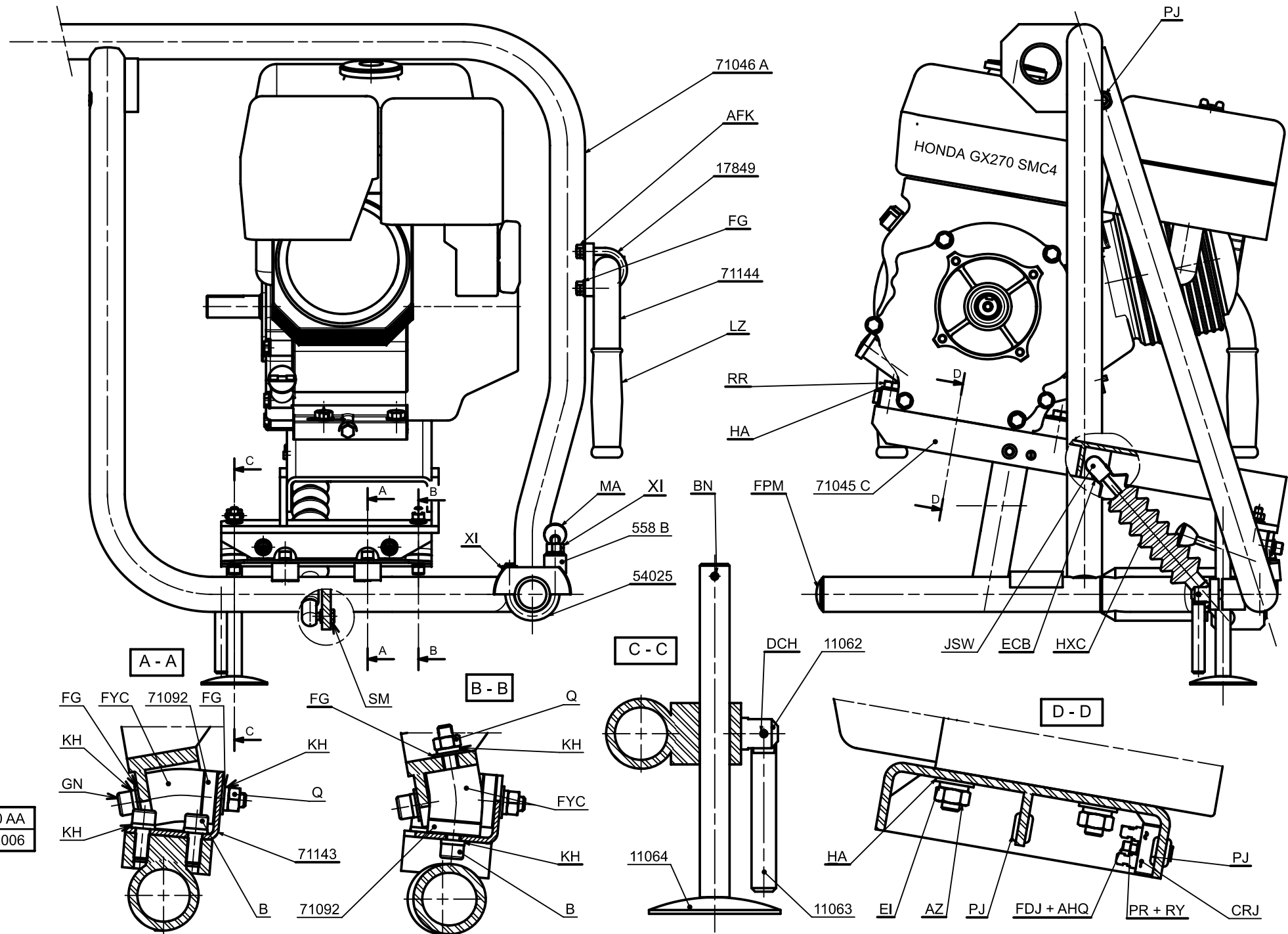
Ref.	Qty	Description	Ref.	Qty	Description
71 095	1	Cap	GQ	4	Screw H 6 x 10
71 097	1	Pulley 60 T	JX	2	Screw Chc 6 x 16
71 098	1	Pulley 30 T	MA	3	Knob Ø 25
71 099	1	Hub	MC	1	Screw Hc 6 x 10 flat end
71 100	1	Reducer casing	VZ	2	Screw H 6 x 12
71 101	1	Belt casing support	ADV	2	Washer W 6
71 102	1	Belt casing	AIU	6	Washer W 5
71 103	1	Pulley flange	AIX	1	Nut Hm 6
			ATE	3	Pin M 8 x 22
			AVW	1	Screw Chc 6 x 60
			BUN	3	Washer JZC 6
			DAV	4	Washer DI 6
			ENK	1	Screw F 6 x 60
			EQE	1	Stuffing box n° 7
			FKY	3	Screw Chc 5 x 25
			FWY	3	Screw Chc 5 x 10
			HNS	4	Screw Fhc M 4 x 10
			JPT	1	Gearmotor 12 V
			JPU	1	Belt 170 XL



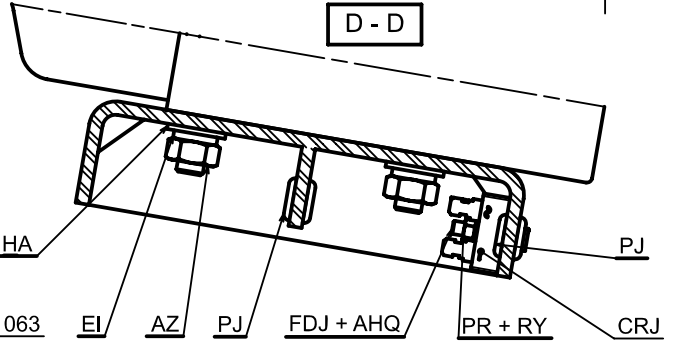
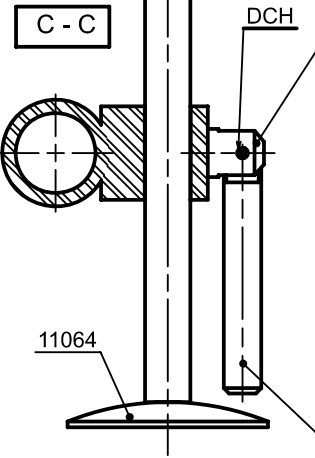
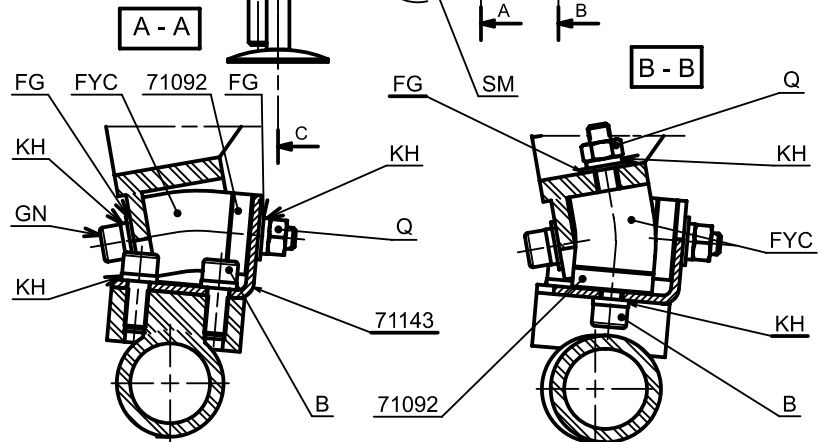
71000 Y
05-2005

Ref.	Qty	Description	Ref.	Qty	Description
11 050	1	Knob	71 021	1	Key
16 027	1	Washer Ø 17,1 x 25 x 4	71 022	1	Thrust nut
30 283	7	Pin M 10 x 46	71 023	1	Brake washer
34 010	1	Washer Ø 12,2 x 25 x 3	71 025	1	Thrust screw
56 039	2	Felt blanking plug	71 027	1	Pinion crosspiece
71 010	1	Articulation axle	71 029 A	1	Obturator
71 011	1	Transmission shaft	71 044	1	Bevel gear 28 T.
71 012 A	1	Sleeve	71 056 A	1	Centre frame
71 013 A	1	Receiving pinion hub	71 057	1	Left frame
71 014	1	Spindle	71 058	1	Right frame
71 015	1	Grinding wheel adjusting screw	71 076	1	Sleeve
71 016	1	Grinding wheel adjusting nut	71 077	1	Cap
71 017	1	Nut cage	71 078	1	Stop washer
71 018	1	Spacer	71 087	4	Centring pin Ø 8
71 019	1	Nut	71 089	1	Plug
71 020	1	Handwheel bearing			

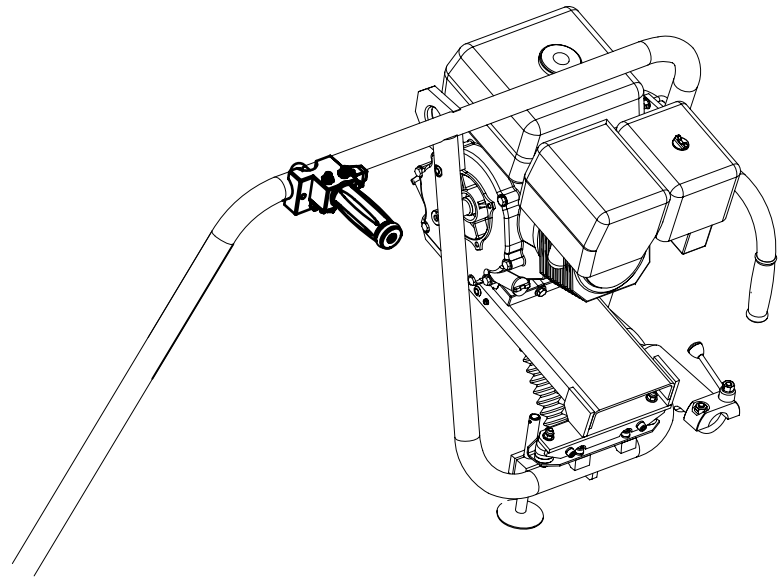
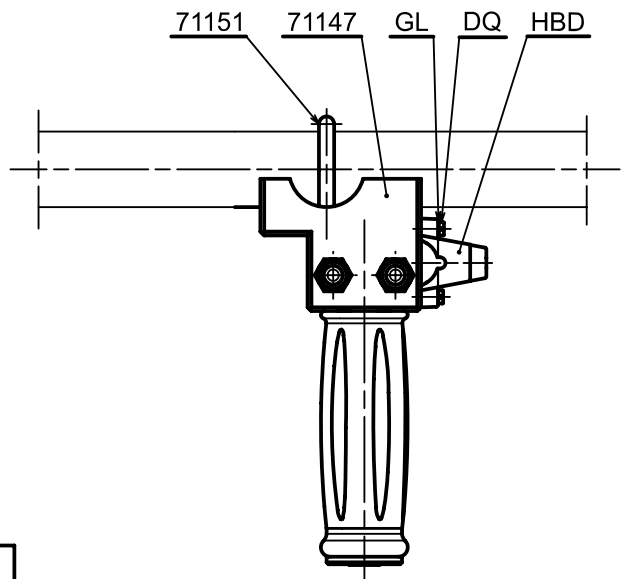
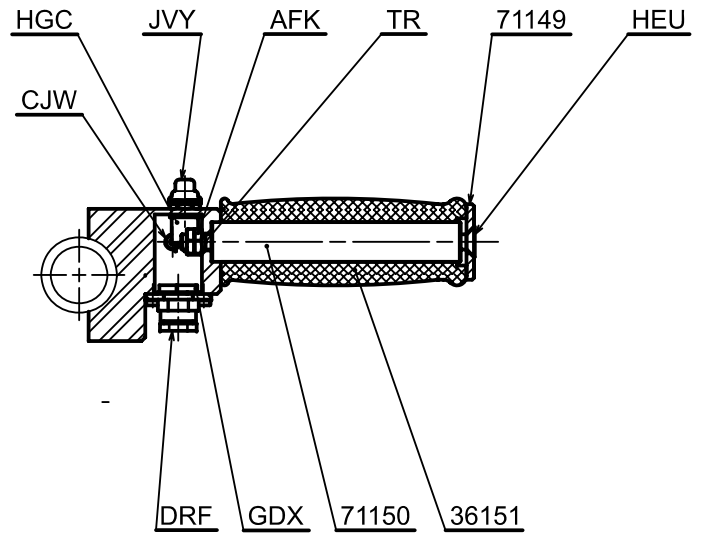
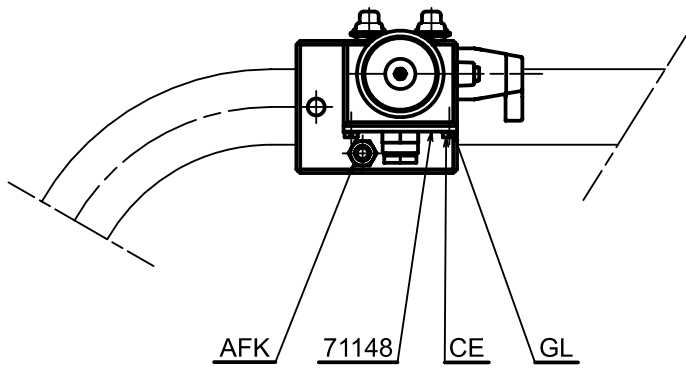
Ref.	Qty	Description	Ref.	Qty	Description
B	8	Screw Chc 8 x 20	TS	5	Pin M 6 x 24
AP	4	Screw H 8 x 20	VN	1	Bearing n° 6007 EE
AT	1	Circlips 30 e	AAA	5	Stop nut H 6
BR	1	Screw Chc 10 x 30	AAX	1	Bearing n° 6006 EE
CM	2	Thrust ball bearing 51103	ABZ	1	Lubricator BEC M 6
CT	1	Brake washer MB 6	ADL	8	Washer Z 10 U
DA	1	Cap nut H 8	BAM	1	Tightening nut KM2
DG	2	Circlips 40 i	BAN	1	Brake washer MB2
EI	1	Washer W 10	BTN	1	Elastic ring 7015-8
EP	5	Washer M 6 U	COC	1	Screw Hc 6 x 6, bowl end
GG	2	Bearing n° 6203 EE	DGM	1	Tightness joint Ø 40 x 52 x 7
GM	1	Tightening nut KM6	GGJ	2	Bearing n° 61906
KH	12	Washer W 8	HWG	1	Seal n° 26
OH	2	Tightening nut KM1	HWH	1	Scraper seal AS 22 - 28 - 5 - 9
OI	1	Brake washer MB1	HWJ	1	Needle bearing HK40 - 16
SS	3	O-ring n° 8	HWK	1	Needle bearing HK45 - 16
TQ	7	Stop nut H 10	HWL	1	Stop segment BR 52
			HWM	1	Tightness joint G 45 x 52 x 4
			JPK		Shims (Ø 15,2 x 21)
			JVZ	1	Key BR 5 x 5 x 15 - T 120



71000 AA  
07 - 2006



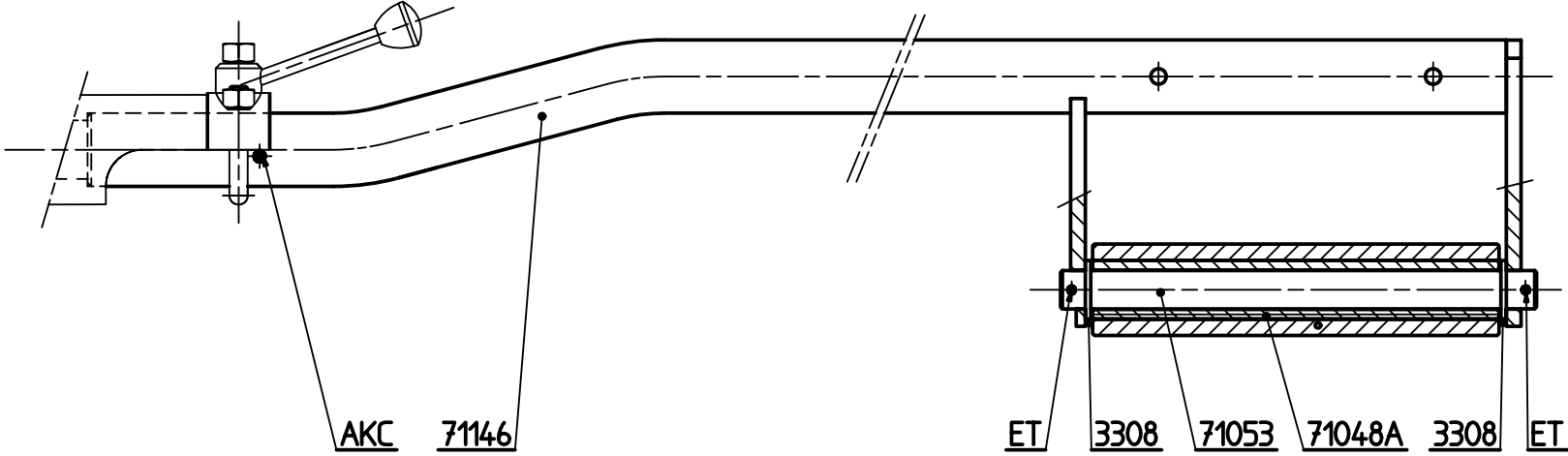
Ref.	Qty	Description	Ref.	Qty	Description
558 B	1	Locking handle	B	6	Screw Chc 8 x 20
11 062	1	Tightening screw	Q	4	Nut H 8
11 063	1	Tightening handle	AZ	4	Nut H 10
11 064	1	Crutch	BN	1	Elastic pin Ø 4 x 20
17 849	2	Locking strap	EI	4	Washer W 10
54 025	1	Locking strap	FG	10	Washer M 8 U
71 045 C	1	Engine fixing plate	GN	2	Screw Chc 8 x 16
71 046 A	1	Outrigger support	HA	8	Washer M 10 U
71 092	4	Spacer Ø 8,5 x 30 x 8	KH	12	Washer W 8
71 143	1	Elastic stud support	LZ	2	Rubber handle
71 144	2	Carrying arm	MA	1	Knob Ø 25
			PJ	4	Grommet
			PR	1	Nut H 5
			RR	4	Screw H 10 x 45
			RY	1	Washer M 5 U
			SM	2	Nut Hm 8
			XI	2	Stop nut H 10
			AFK	4	Stop nut H 8
			AHQ	1	Washer DE 5
			CRJ	1	Bridge rectifier
			DCH	1	Elastic pin Ø 4 x 18
			ECB	1	Clamp
			FDJ	1	Screw Cs 5 x 25
			FPM	3	Plug
			FYC	4	Elastic stud 520027
			HXC	1	Bellows V 6 - 639
			JSW	1	Gas spring C = 80 - 800 N



71000 AB  
07 - 2006

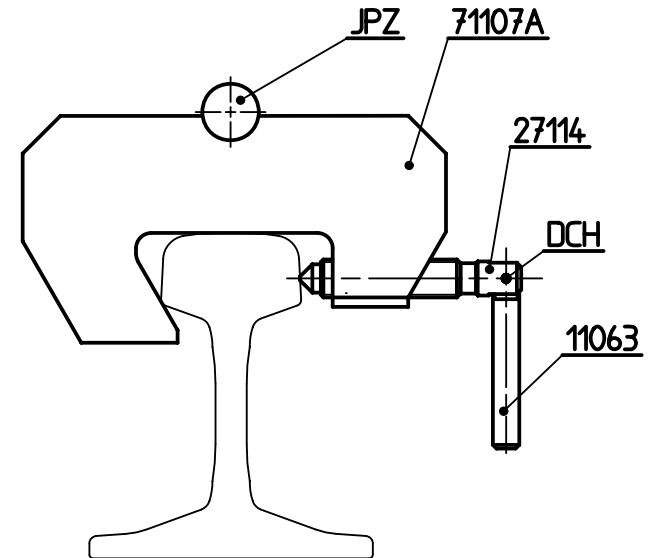
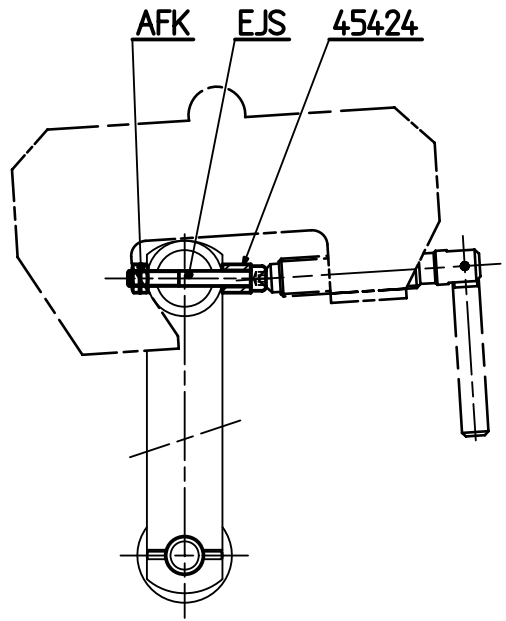
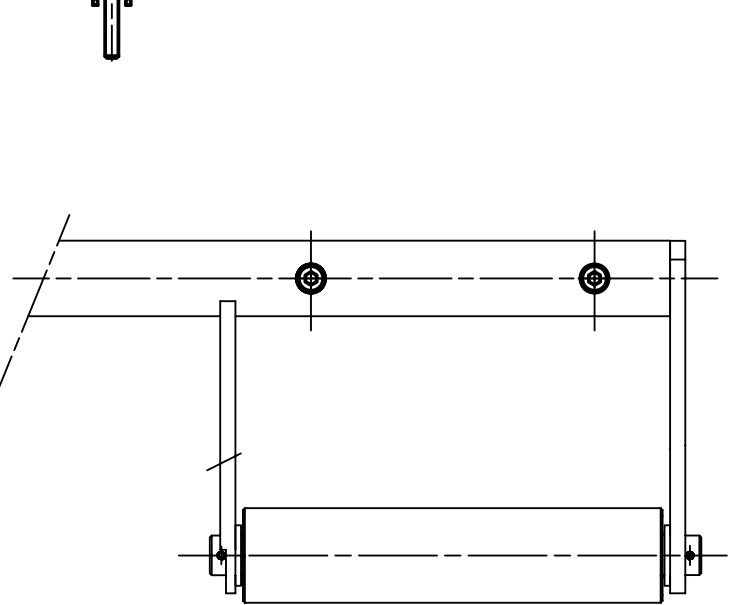
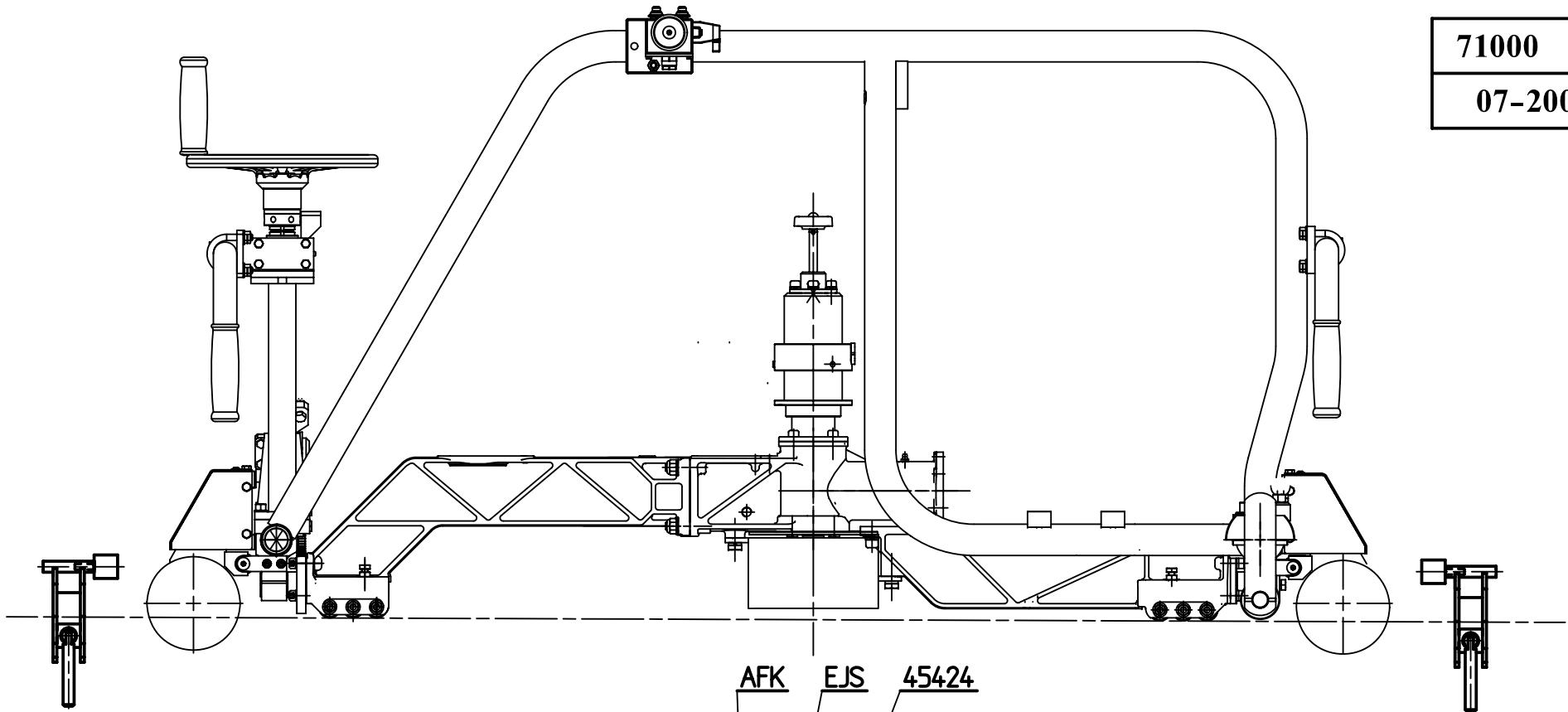
Ref.	Qty	Description	Ref.	Qty	Description
36 151	1	Rubber handle	CE	4	Screw Cs 4 x 10
71 147	1	Button box	DQ	2	Screw Cs 4 x 16
71 148	1	Cover	GL	6	Washer DI 4
71 149	1	Washer	TR	1	Stud M 8 x 27
71 150	1	Handle	AFK	2	Stop nut H 8
71 151	1	Locking strap	CJW	1	Cord-eye
			DRF	1	Stuffing box n° 9
			GDX	1	Counter nut n° 9
			HBD	1	Stop switch
			HEU	1	Screw Fhc 8 x 16
			HGC	2	Switch
			JVY	2	Tightness cap

71000 AC
07-2006

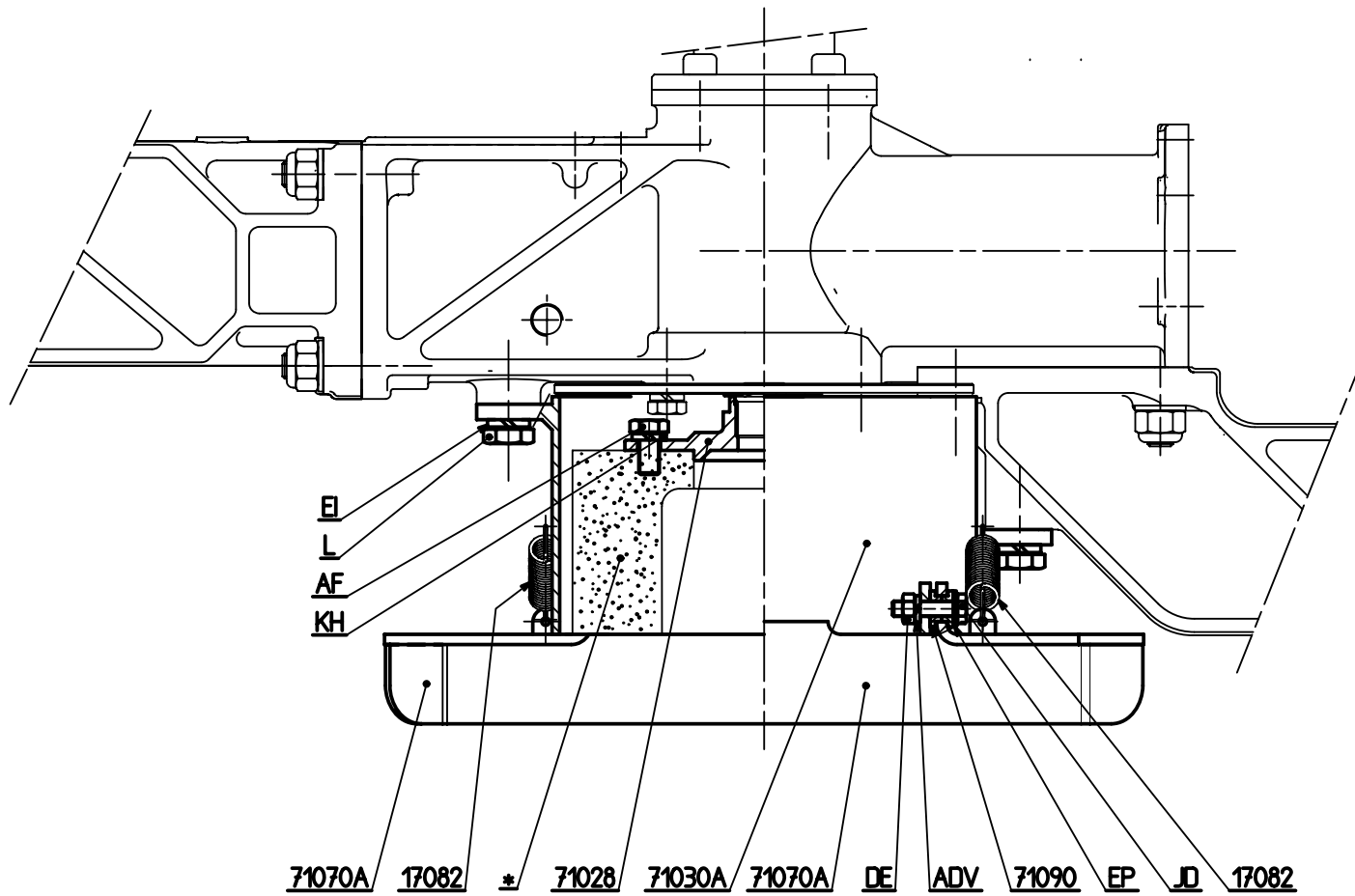


Ref.	Qty	Description	Ref.	Qty	Description
3 308	2	Washer Ø 21,5 x 32 x 3	ET	2	Elastic pin Ø 4 x 40
71 048 A	1	Roller	AKC	1	Elastic pin Ø 6 x 70
71 053	1	Roller axle			
71 146	1	Outrigger (1435 track gauge)			
71 146 A	1	" (1524 track gauge)			
71 146 B	1	" (1600 track gauge)			
71 146 C	1	" (1668 track gauge)			
71 146 D	1	" (1676 track gauge)			
71 146 E	1	" ( 914 track gauge)			
71 146 F	1	" (1000 track gauge)			
71 146 G	1	" (1050 track gauge)			
71 146 H	1	" (1067 track gauge)			

71000 AD  
07-2006



Ref.	Qty	Description	Ref.	Qty	Description
11 063	2	Tightening handle	AFK	2	Stop nut H 8
27 114	2	Screw	DCH	2	Elastic pin Ø 4 x 18
45 424	2	Spacer	EJS	2	Screw Chc 8 x 65
71 107 A	2	Thrust	JPZ	2	Elastic pin 511312

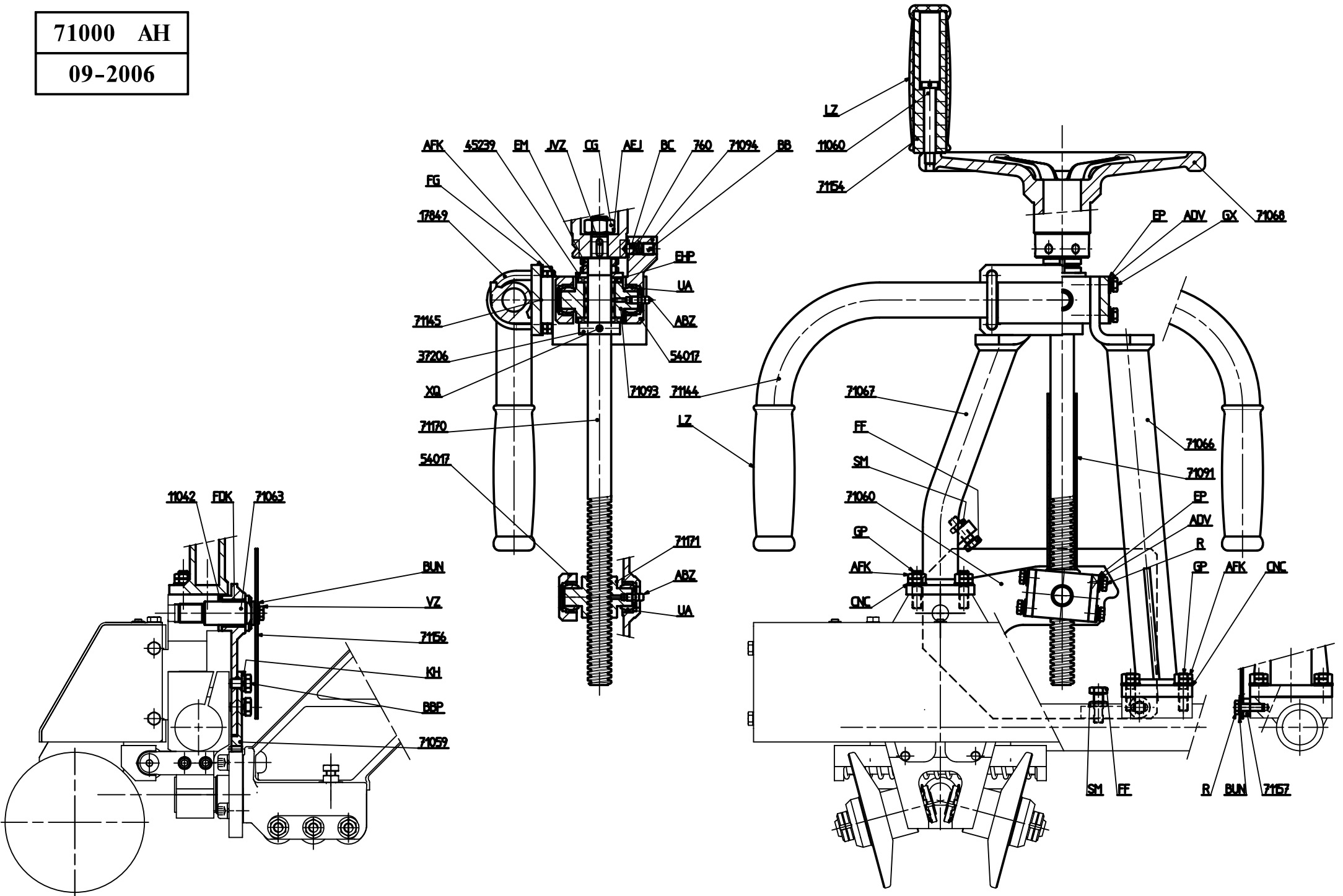


71000 AE
07-2006

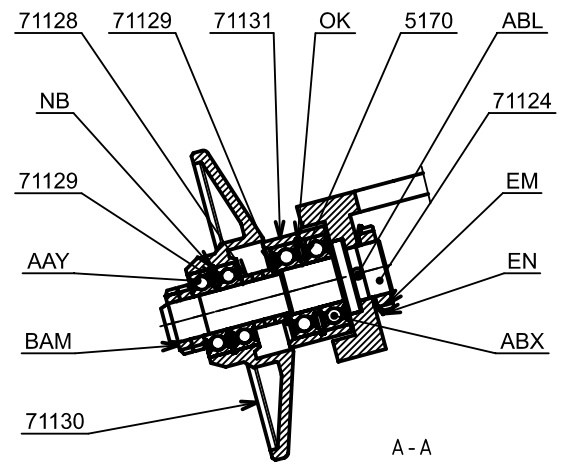
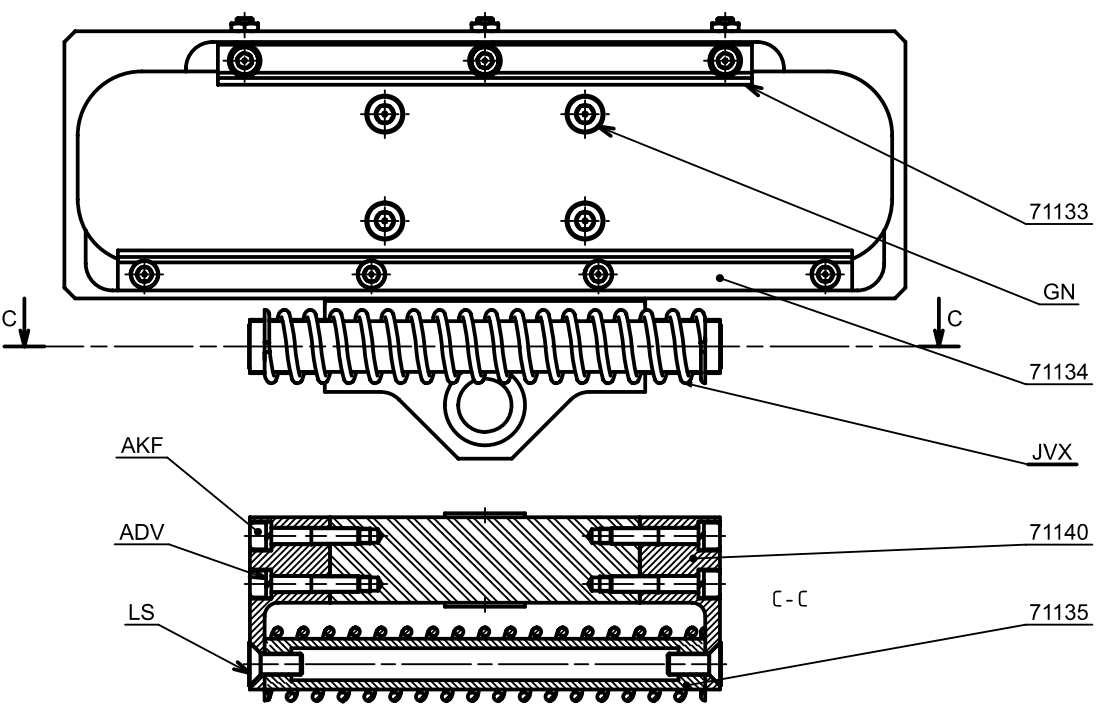
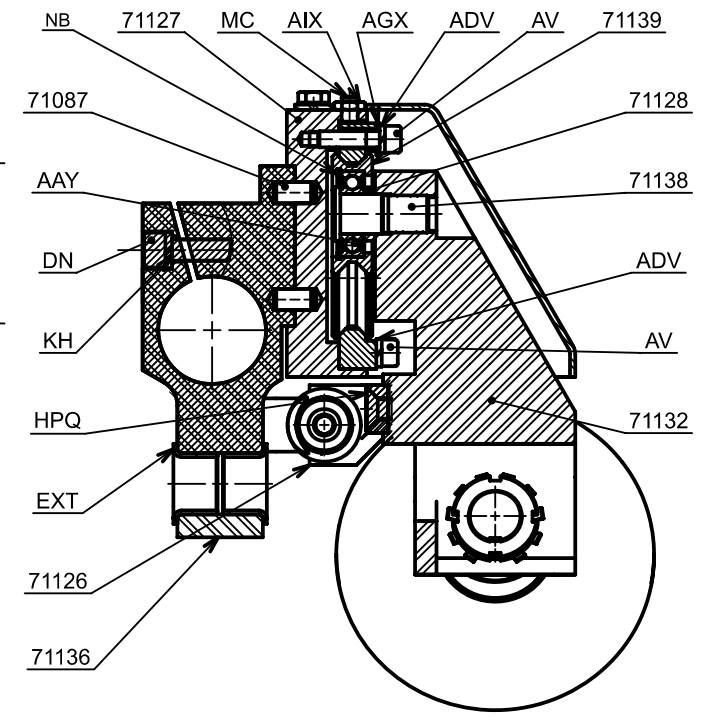
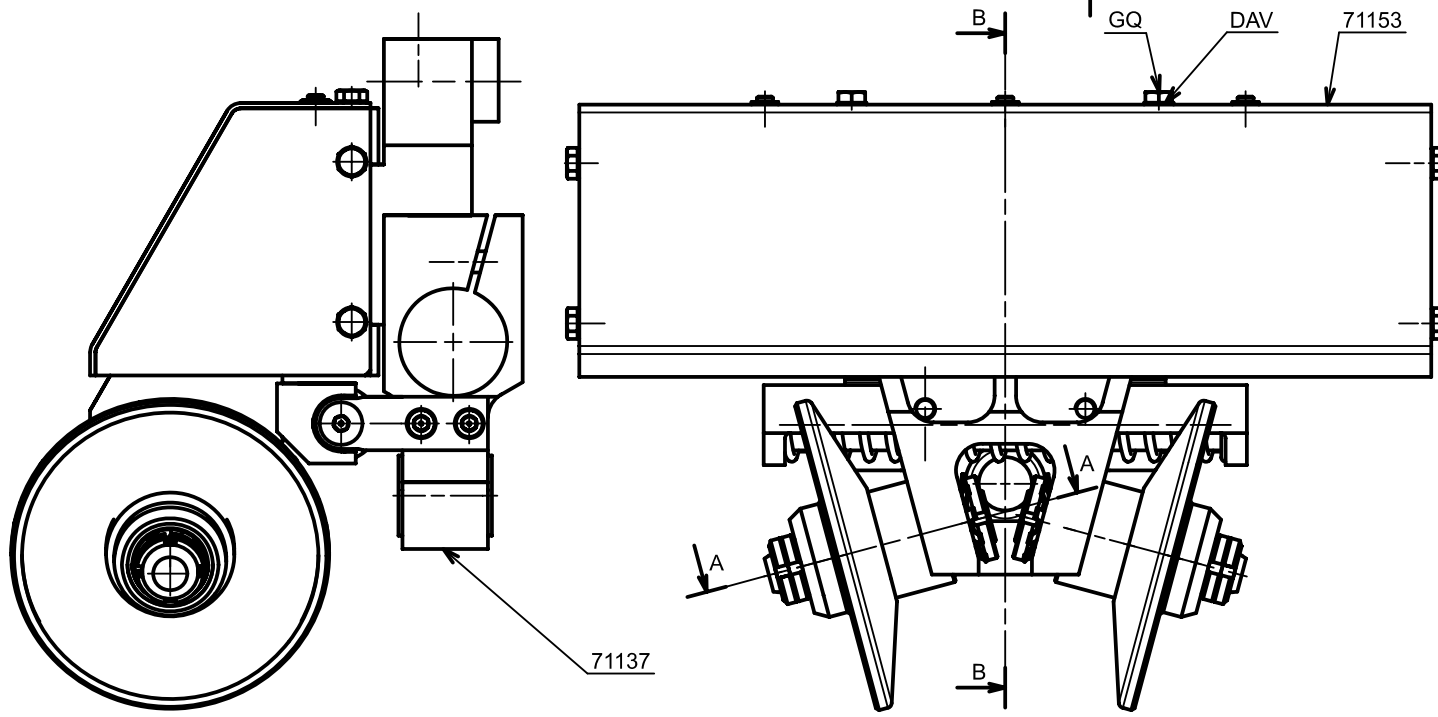
Ref.	Qty	Description	Ref.	Qty	Description
17 082	2	Spring	L	2	Screw H 10 x 20
71 028	1	Stone holder	AF	4	Screw H 8 x 16
71 030 A	1	Grindstone casing Ø 150 x 72	DE	4	Nut H 6
71 070 A	2	Deflector	EI	2	Washer W 10
71 090	8	Deflector ring	EP	4	Washer M 6 U
			JD	4	Screw H 6 x 25
			KH	4	Washer W 8
			ADV	4	Washer W 6

\* Grindstone type 6 - Ø 150 x 72 x 4 M8 / Ø 90 - 50 m/s

71000 AH  
09-2006

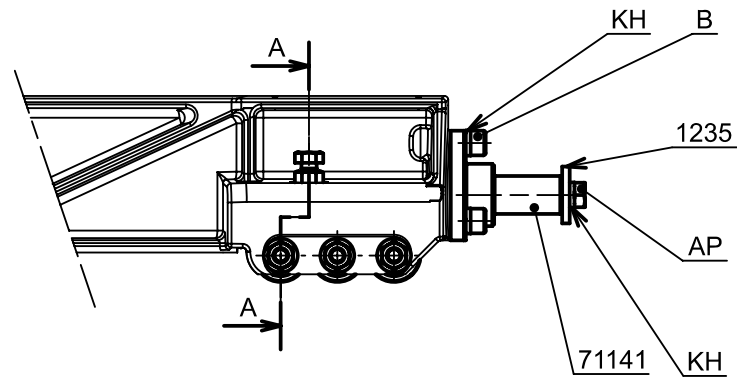
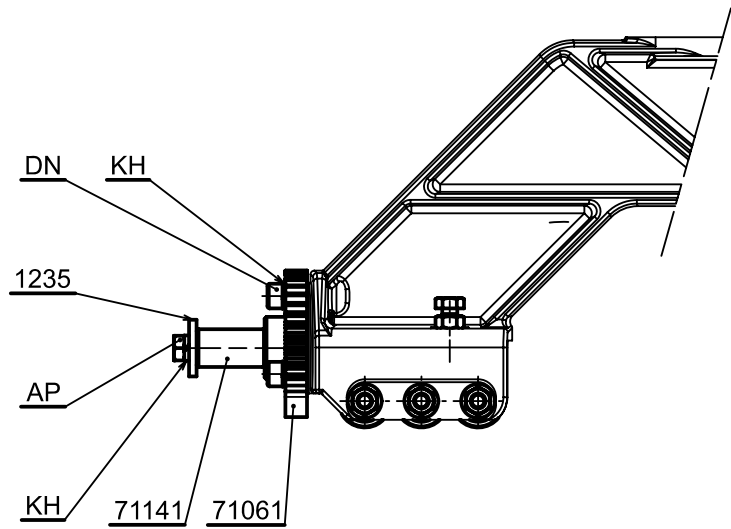


Ref.	Qty	Description	Ref.	Qty	Description
760	1	Spring	R	5	Screw H 6 x 20
11 042	1	Washer Ø 20,2 x 30 x 3	BB	1	Screw ST 10 x 10 flat end
11 060	1	Handle axle	BC	1	Steel ball Ø 8,7
17 849	2	Strap	CG	1	Nut H 14
37 206	1	Stop ring	EM	2	Tightening nut KM 4
45 239	1	Washer Ø 20,1 x 40 x 4	EP	12	Washer M 6 U
54 017	2	Swivel support	FF	2	Screw H 8 x 25
71 059	1	Toothed sector	FG	4	Washer M 8 U
71 060	1	Lever	GP	8	Pin M 8 x 32
71 063	1	Toothed sector axle	GX	4	Screw H 6 x 30
71 066	1	Right angle	KH	2	Washer W 8
71 067	1	Left angle	LZ	3	Rubber handle
71 068	1	Inclination handwheel	SM	2	Nut Hm 8
71 091	1	Screw protector	UA	4	Swivel GE 15 D
71 093	1	Thrust cage	VZ	1	Screw H 6 x 12
71 094	1	Swivel support	XQ	1	Elastic pin Ø 5 x 35
71 144	1	Carrying arm	ABZ	2	Lubricator BEC M 6
71 145	1	Carrying arm support	ADV	12	Washer W 6
71 154	1	Handwheel handle	AEJ	1	Washer DE 14
71 156	1	Protective plate	AFK	12	Brake nut H 8
71 157	1	Spacer	BBP	2	Screw H 8 x 12
71 170	1	Inclination screw	BUN	2	Washer JZC 6
71 171	1	Nut	CNC	8	Washer Z 8 U
			EHP	2	Combined bearing RAX 720
			FDK	1	Ring PAP 2020 P10
			JVZ	1	Key BR 5 x 5 x 15 - T 120

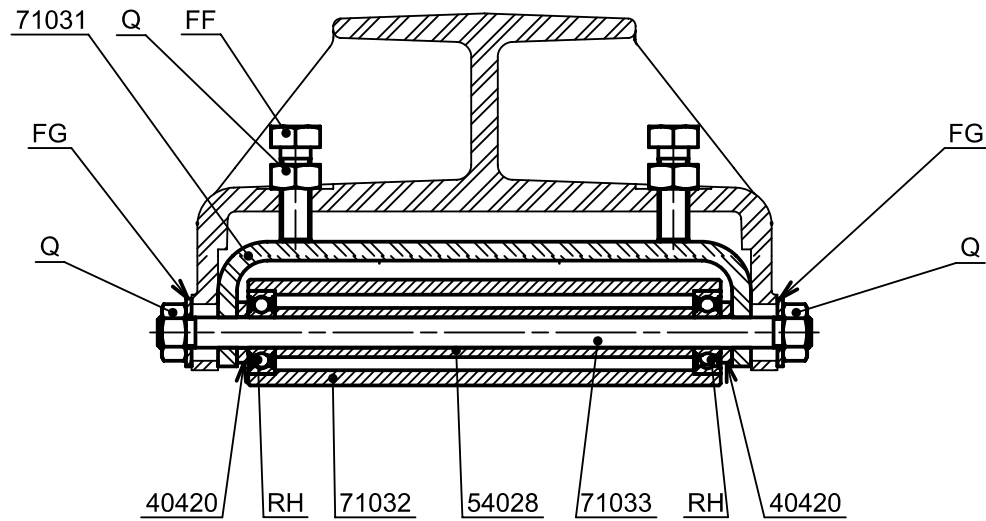


71000 AJ  
09-06

Ref.	Qty	Description	Ref.	Qty	Description
5 170	4	Washer Ø 17,1 x 22 x 1,6	AV	14	Screw Chc 6 x 25
71 087	4	Centring pin Ø 8	DN	4	Screw Chc 8 x 25
71 124	4	Axle	EM	4	Nut KM 4
71 126	2	Thrust	EN	4	Washer MB 4
71 127	2	Casing	GN	8	Screw Chc 8 x 16
71 128	18	Washer Ø 15,1 x 20 x 4	GQ	12	Screw H 6 x 10
71 129	8	Washer Ø 15,1 x 23 x 1,3	KH	4	Washer W 8
71 130	4	Guide flange	LS	4	Screw Fhc 8 x 20
71 131	4	Guide roller	MC	6	Screw Hc 6 x 10 flat end
71 132	2	Support	NB	10	Circlips 32 i
71 133	2	Upper slide	OK	4	Circlips 35 i
71 134	2	Lower slide	AAV	14	Bearing n° 6002 EE
71 135	2	Spring guide	ABL	4	Elastic pin Ø 4 x 8
71 136	1	Right box	ABX	8	Bearing n° 6003 EE
71 137	1	Left box	ADV	22	Washer W 6
71 138	6	Axle	AGX	6	Washer Z 6
71 139	6	Roller	AIX	6	Nut Hm 6
71 140	4	Square	AKF	8	Screw Chc 6 x 35
71 153	2	Protective case	BAM	8	Nut KM 2
			DAV	12	Washer DI 6
			EXT	4	Ring PAF 20165 P 10
			HPQ	4	Screw Fhc 8 x 25
			JVX	2	Spring

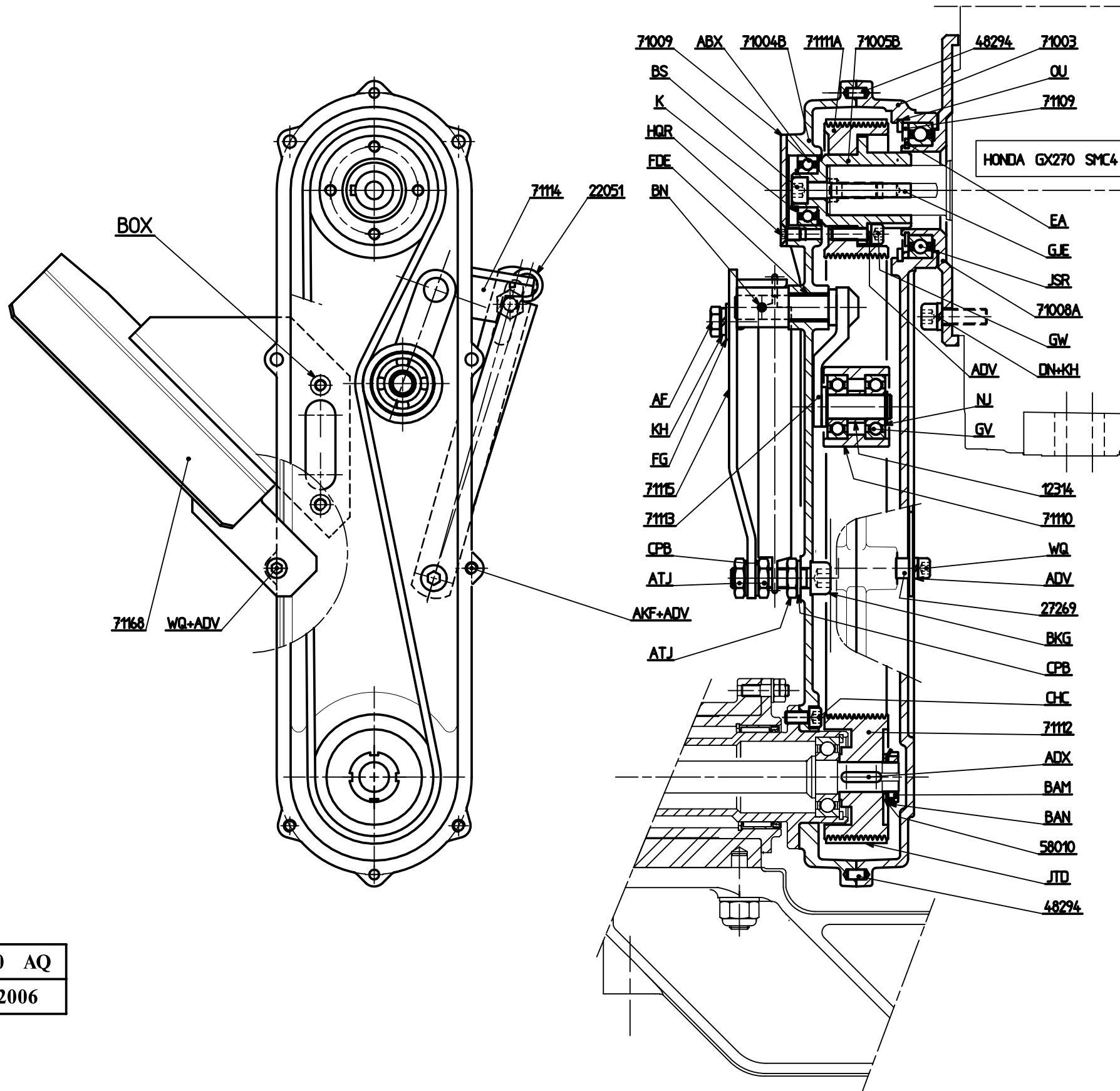


A-A



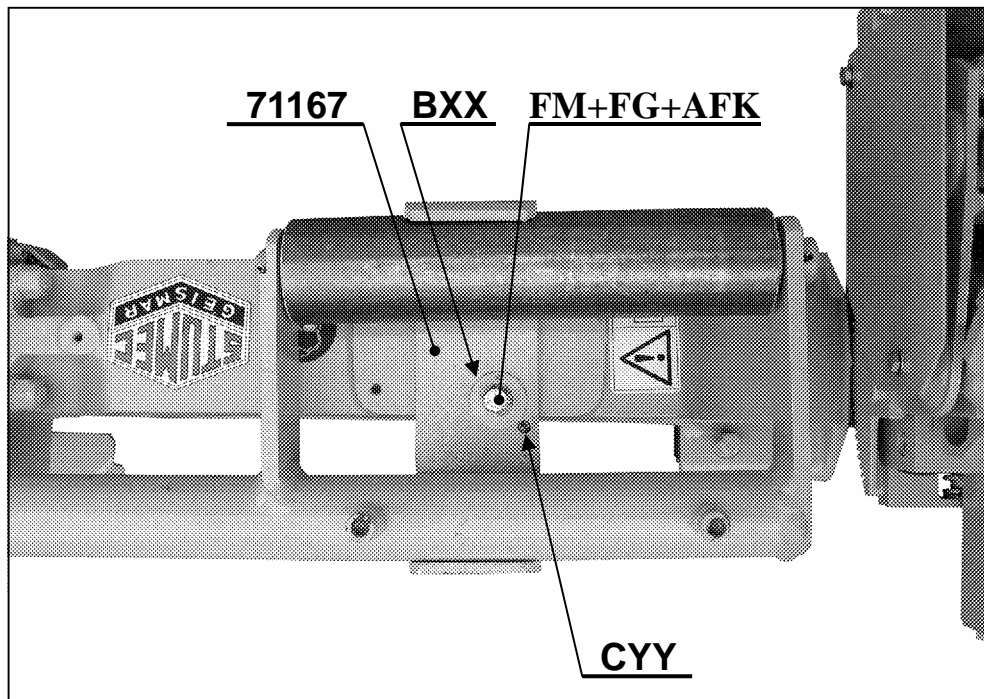
71000 AK
09-06

Ref.	Qty	Description	Ref.	Qty	Description
1 235	2	Washer Ø 9 x 30 x 4	B	3	Screw Chc 8 x 20
40 420	12	Washer Ø 8,2 x 16 x 3	Q	16	Nut H 8
54 028	6	Bearing roller spacer	AP	2	Screw H 8 x 20
71 031	2	Bearing roller support	DN	3	Screw Chc 8 x 25
71 032	6	Bearing roller	FF	4	Screw H 8 x 25
71 033	6	Bearing roller axle	FG	12	Washer M 8
71 061	1	Driving pinion	KH	8	Washer W 8
71 141	2	Guiding roller axle	RH	12	Bearing n° 608 EE

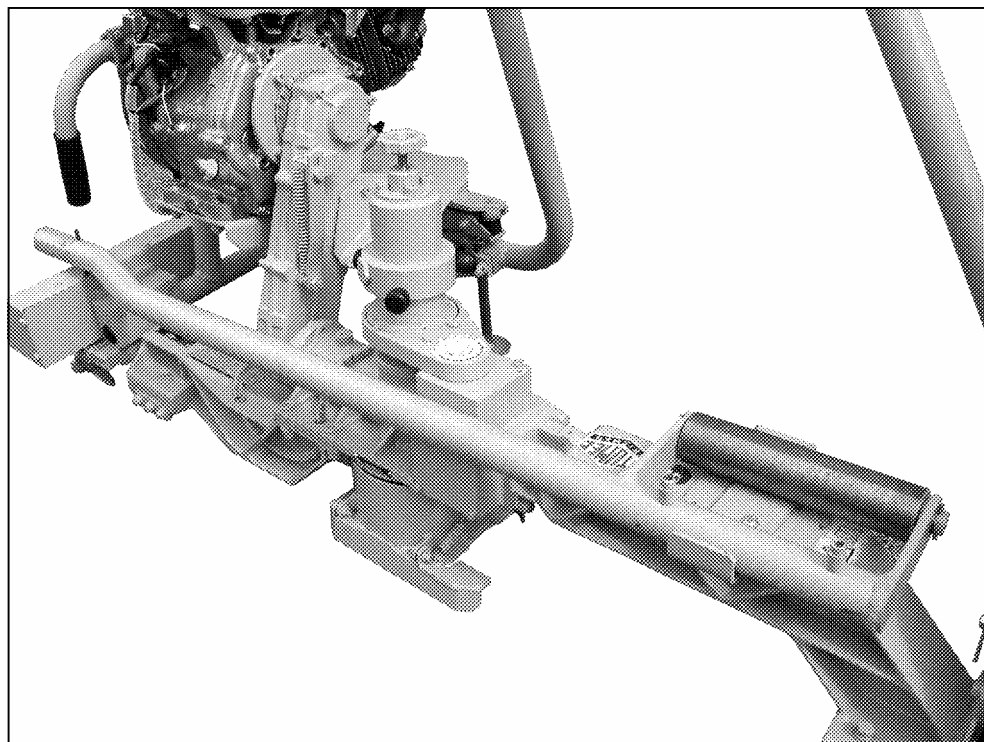


71000 AQ
11-2006

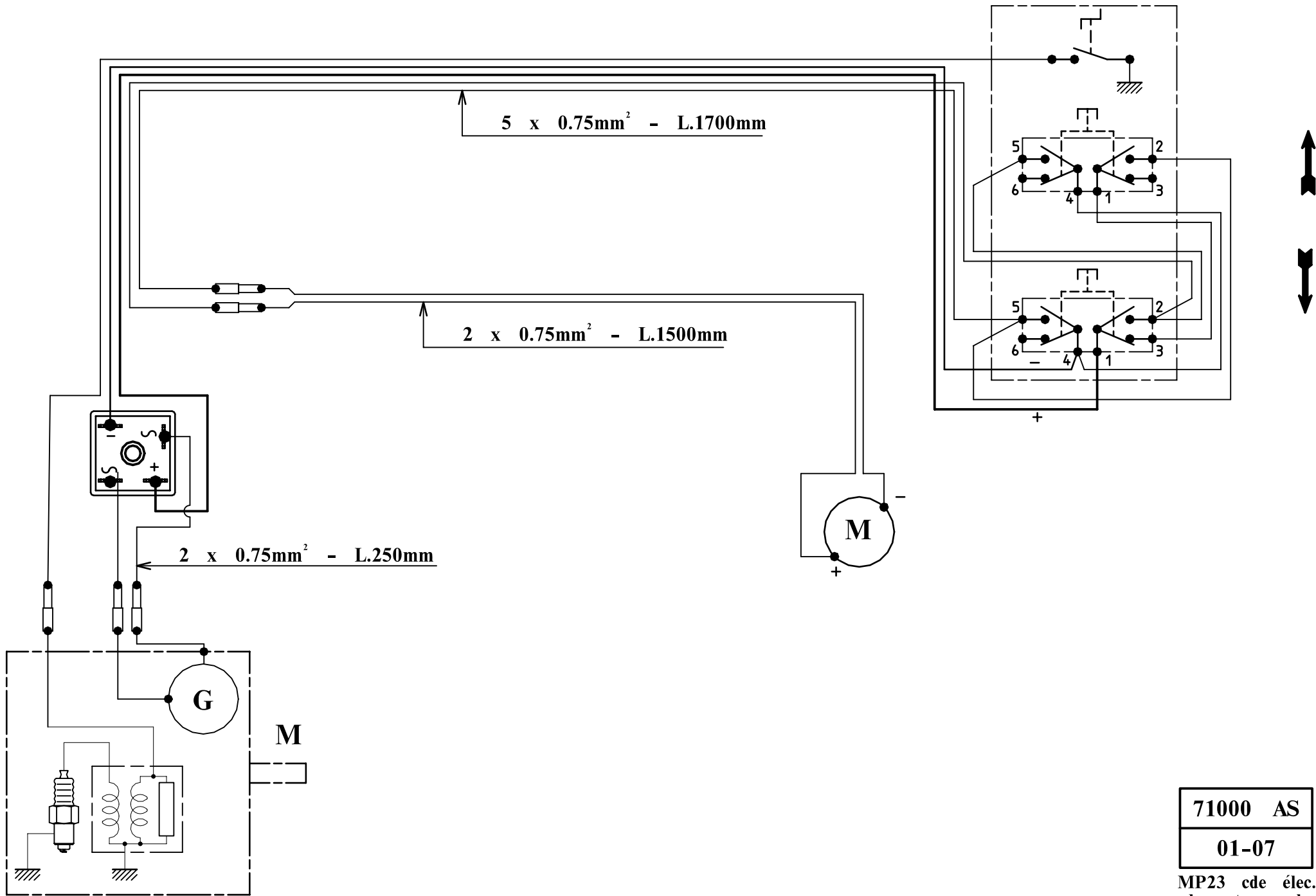
Ref.	Qty	Description	Ref.	Qty	Description
12 314	1	Spacer	K	1	Circlips 17 e
22 051	1	Spring	AF	1	Screw H 8 x 16
27 269	2	Spacer	BN	1	Elastic pin Ø 4 x 20
48 294	2	Centring pin Ø 5 x 9	BS	1	Screw Chc 8 x 35
58 010	1	Washer Ø 15,1 x 23 x 1,5	DN	4	Screw Chc 8 x 25
71 003	1	Belt casing engine side	EA	1	Circlips 45 e
71 004 B	1	Belt casing frame side	FG	1	Washer M 8 U
71 005 B	1	Driving pulley hub	GV	2	Bearing n° 6201 EE
71 008 A	1	Mounting flange	GW	4	Screw Chc 6 x 20
71 009	1	Cap	KH	5	Washer W 8
71 109	1	Spacer	NJ	1	Circlips 12 e
71 110	1	Tension roller	OU	1	Circlips 68 i
71 111 A	1	Driving pulley	WQ	2	Screw Chc 6 x 40
71 112	1	Receiving pulley	ABX	1	Bearing n° 6003 EE
71 113	1	Tension axle	ADV	12	Washer W 6
71 114	1	Spring lever	ADX	1	Key BR 5 x 5 x 20
71 115	1	Rod	AKF	6	Screw Chc 6 x 35
71 168	1	Spark protector	ATJ	3	Nut Hm 10
			BAM	1	Tightening nut KM2
			BAN	1	Brake washer MB2
			BKG	1	Screw Chc 10 x 40
			BOX	2	Screw Chc 6 x 7
			CHC	4	Screw Chc 6 x 12
			CPB	3	Washer DI 10
			FDE	1	Ring PAP 1220 P10
			GJE	1	Key BD 7 x 7 x 40
			HQR	3	Screw Fhc 6 x 10
			JSR	1	Bearing n° 61909-2 RS1
			JTD	1	Belt 13 J - L = 813



<b>N° 71000 AM</b>
<b>10 - 06</b>



Rep	Nb	Désignation	Description
71167	1	Bride	Clamp
FG	1	Rondelle M8U	Washer M8U
FM	1	Vis H8 x 30	Screw H8 x 30
AFK	1	Ecrou frein H8	Stop nut H8
BXX	1	Rondelle élastique	Elastic washer
CYY	1	Goupille élastique Ø 6 x 10	Elastic pin Ø 6 x 10



71000 AS
01-07

MP23 cde élec.  
descente meule