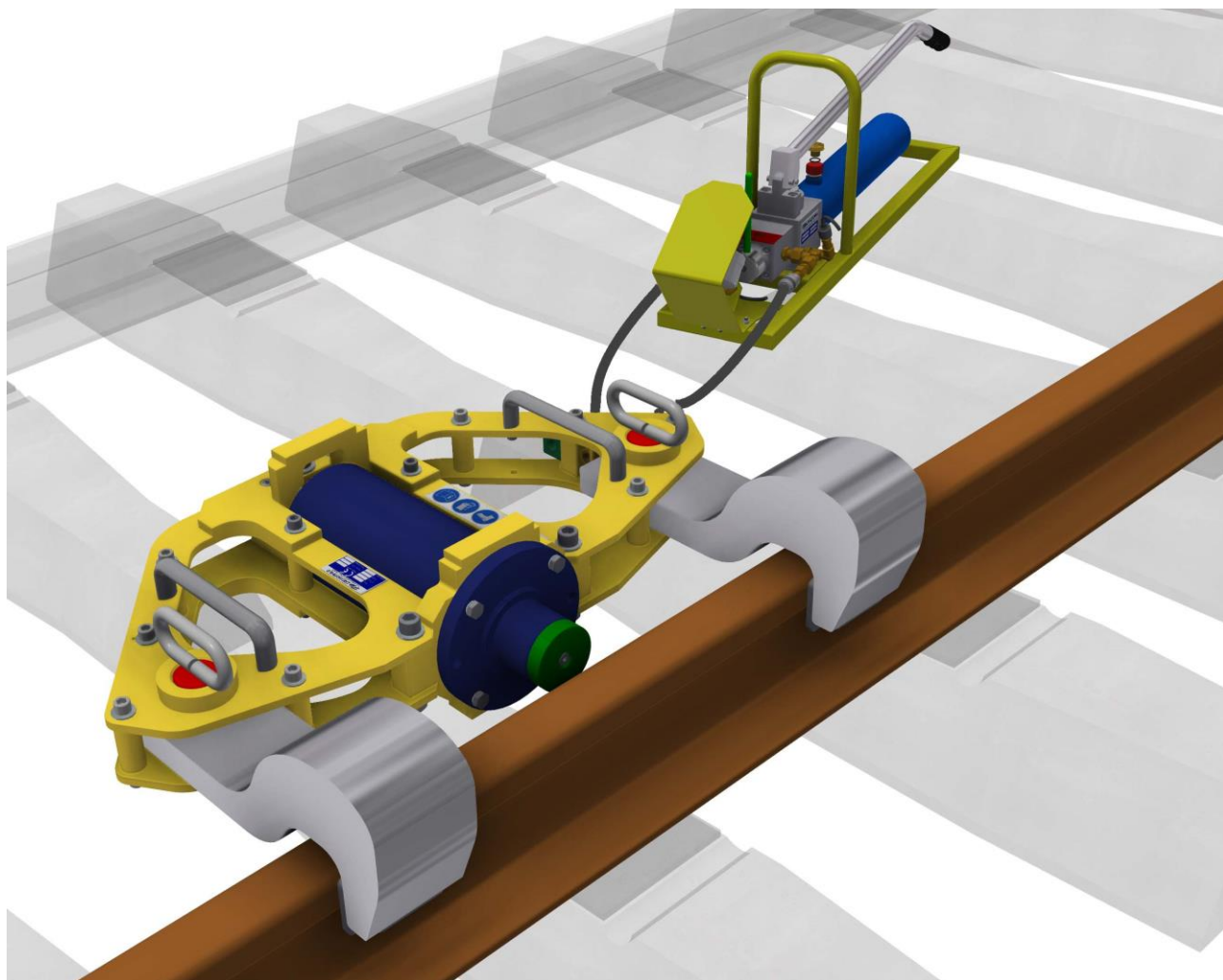


## ***LIGHTWEIGHT RAILS BENDING MACHINE***

JLP75



**TABLE OF CONTENT**

<b>1.</b>	<b>MAIN DESCRIPTION .....</b>	<b>3</b>
<b>2.</b>	<b>BENDING MACHINE EQUIPMENT .....</b>	<b>3</b>
<b>3.</b>	<b>TECHNICAL CHARACTERISTICS .....</b>	<b>4</b>

## 1. MAIN DESCRIPTION

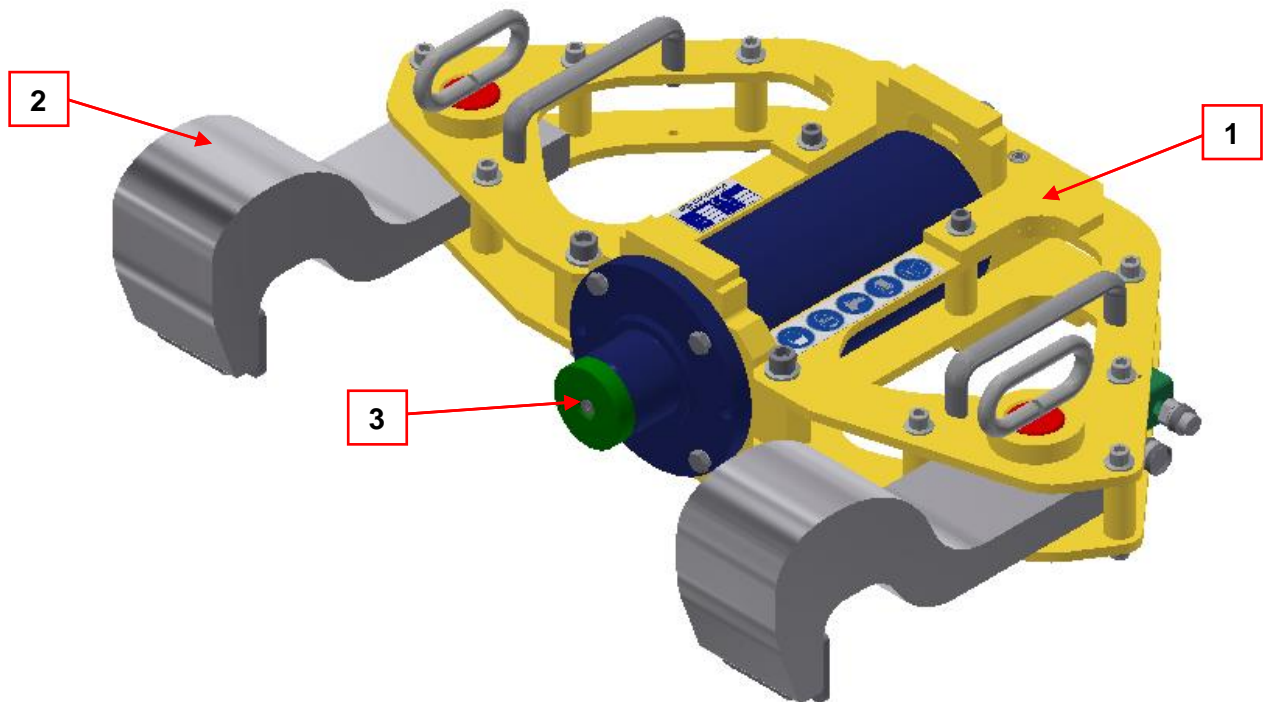
The lightweight hydraulic bending machine for rails is designed for straightening or bending a curve in the horizontal direction. The machine develops a force of 750 kN in the center between two bearing points 680mm apart. Its lightweight design allows simple handling.

The hydraulic pump unit, give the hydraulic pressure alimentation for the cylinder actioning the lever. The 2 steps pump with automatic step change between low and high pressure, offer an easy use for the operator who actioned the lever.

## 2. BENDING MACHINE EQUIPMENT

The JLP75 bending machine is composed of:

- a frame [1]
- two hooks [2]
- a hydraulic cylinder [3].



### 3. TECHNICAL CHARACTERISTICS

#### Bending machine

Rails type:.....	Flat bottom & Grooved rail
Overall length: .....	880 mm
Overall width: .....	667 mm
Overall height: .....	252 mm
Center force: .....	750 kN
Bending moment: .....	125 kN.m
Force – Rod extended: .....	750 kN to 665 bar (76,5t)
Force – Rod retracted: .....	17,5 kN to 50 bar (1,8t)
Total weight: .....	102 kg

#### Manual pump unit

Overall length: .....	1200 mm
Overall width: .....	210 mm
Overall height: .....	380 mm
Maximal pressure: .....	700 bar
Operating pressure L.P: .....	0 à 50 bar
Operating pressure H.P output: .....	50 à 665 bar
Operating pressure H.P input:.....	50 bar
Flow L.P: .....	32,6 cm <sup>3</sup> /coup
Flow H.P: .....	6,6 cm <sup>3</sup> /coup
Tank capacity:.....	2 liters
Empty weight: .....	13,3 kg
Hydraulic oil: .....	TOTAL EQUIVIS ZS32

*In the interest of our customers and in anticipation of the constant improvements that we wish to bring to our equipment, we reserve the right to modify certain characteristics (without modifying its functions) during production. The track gauge and network type should be sent to us beforehand for verification, to ensure that the equipment offered is compatible.*

*Any modification and / or technical change arising after the date of the offer may result in a revision of the commercial offer.*

*Drawings and pictures may include some options and are not contractual.*

*Masses and dimensions may vary by  $\pm$  5%.*