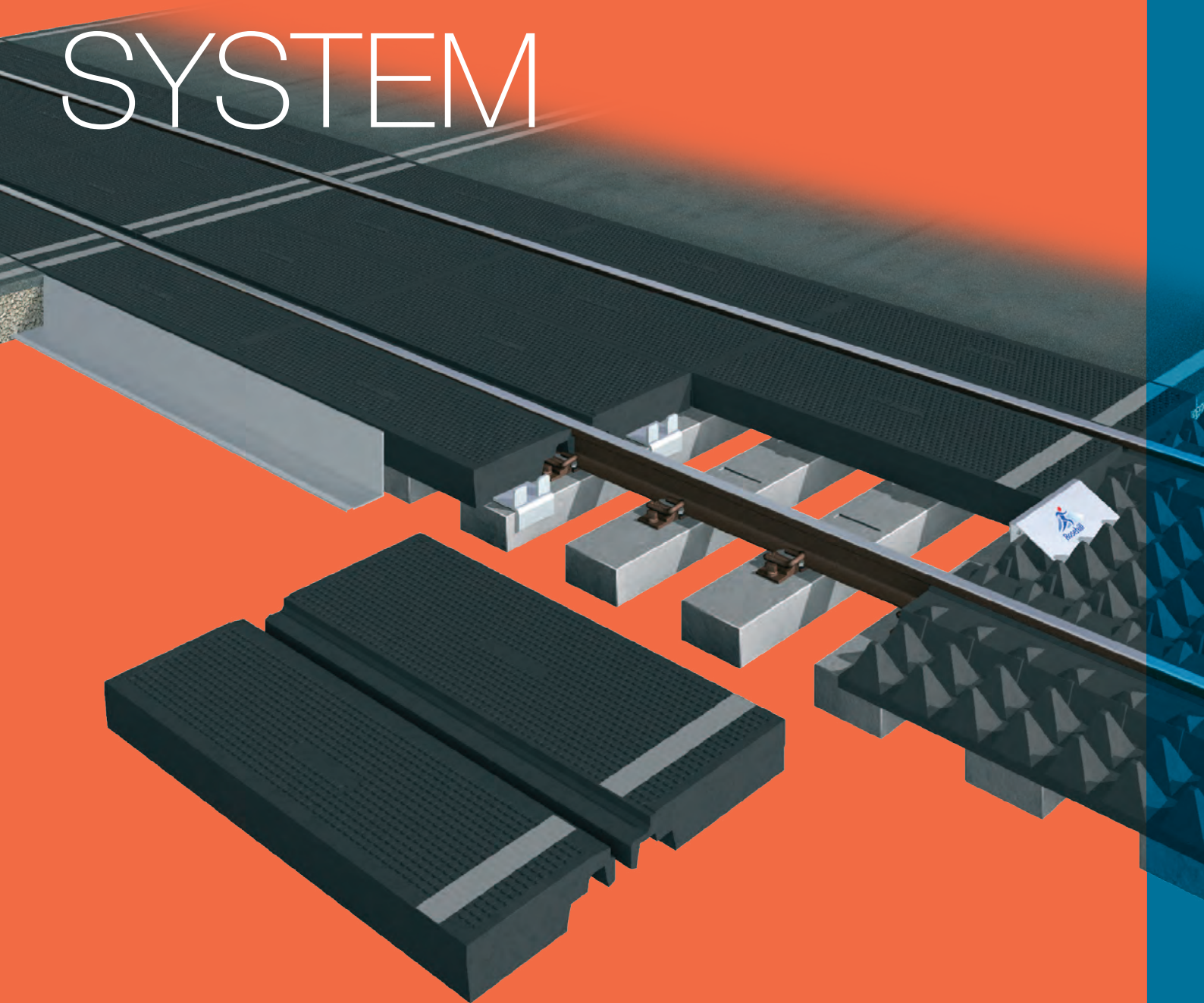




Rosehill Rail



BASEPLATED CROSSING SYSTEM



PROVEN ENGINEERING EXCELLENCE

The Rosehill Baseplated Crossing System

» **The Baseplated Crossing System has unique advantages over other more rigid systems which cannot adapt to bespoke site specific requirements.**

It can be cut to fit around fishplates, check rails (single and double) turnouts and in rail sheds and depots. Panels can also be manufactured to fit around tight curves which is especially useful for tramway applications.

The system allows for very fast installation, is ideal for average sized crossings and is available in various grades to accommodate Track Access, Occupational, Agricultural and Pedestrian applications.



- Rosehill operates a quality assurance system complying with the International Standard ISO9001:2008, which is audited annually by NQA (National Quality Assurance).
- Panels are designed to fit each bespoke crossing permutation of Gauge, Rail, Sleeper and Fastener type on sleepers at 600mm centres.
- Each panel is marked when moulded so it can be clearly read from above, the identification comprises of:
 - Crossing grade
 - Rail Type
 - Sleeper Type
 - Fastener type
 - Year of manufacturer
 for example: ROAD UIC60 B70 SKL14 2011

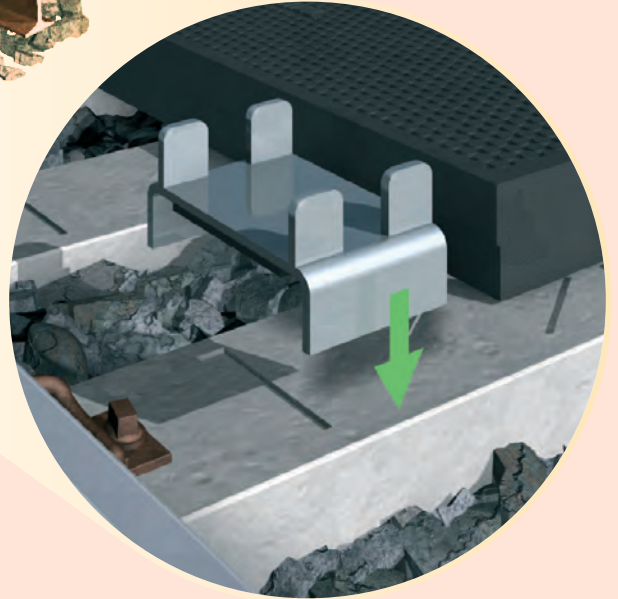


- Traceability is achieved by recording on computer, production data, weight and visual check of each panel at the time of manufacture. Each panel can be traced to the order and manufacturing batch. This enables checking against the engineering drawings should the need arise at a later date.

- Significant cost benefits are achieved by quick installation, reducing track possession time.
- Easy to maintain with minimal maintenance
 - all of our panels are strong, robust and dependable.
- Rosehill Rail Crossing Panels do not pose any risk to the environment. They are manufactured from re-cycled rubber tyres and bonded together with an advanced polyurethane binder using a revolutionary unique cold-cure manufacturing process. Once the manufacturing process is complete the panels will not react with soil, or water and will not leach chemicals into the environment, or emit any harmful vapours, or odours into the atmosphere.
- Design Rights - All components in our level crossing systems are designed by Rosehill Rail (a Division of Rosehill Polymers Limited), including those supplied under other names by our global distributors.
- Delivering excellent customer service – every time.



» Baseplates are not fixed to sleepers

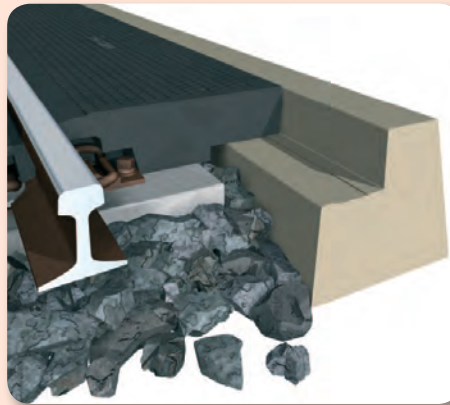


Baseplated Crossing System

» ADVANTAGES

- As with all Rosehill designed panels, the Baseplated Crossing System is easy to install, just a simple baseplate which pulls the panels together. Site installation is fast and simple with no specialised tools required.
- Single panels can be removed and replaced from anywhere within the crossing area.
- The system can be manufactured to suit any gauge or rail type.

- Panels can also be installed in concrete Barmac type edge beams (below).



» FEATURES

- Panel dimensions are 1.8 metres long and half the gauge width. The cess panels are 1.8 metres long and can be manufactured to fit concrete or plastic edge beams.
- The panels are connected by baseplates and can be made to suit narrow, standard or wide gauge and any rail and sleeper.
- Conforms to many international rail specifications.



General Purpose Panels (TAPs)



- » These crossing panels are designed for emergency access and maintenance access onto, or across the tracks, and for use in depots, sheds and relief roadways - see the Stromferry images on the back of this leaflet.

» ADVANTAGES

- The baseplated panels can be supplied precut to your individual specification.
- The panels can be easily adapted on-site to overcome unexpected situations.
- The panels are durable, quick and easy to install and can be removed and reused if required.
- The panels can be manufactured for narrow, standard or wide gauge track.

Pedestrian Crossings



- » Pedestrian panels are designed to provide safe transit for foot traffic across the tracks and have been supplied to rail networks throughout Europe, Australia and New Zealand.

» FEATURES

- The panels size is exactly as all the other grades - 1.8 metres long by half the gauge.
- These panels have been used extensively in the UK and abroad for temporary, or permanent access sites.



To view the Baseplated Panel System, visit www.rosehillrail.com

Rosehill **Safe** Lifting Pins

- » **Tested to a safe working load of 350kg, each set of lifting pins is supplied with appropriate LOLER certification.**

Rosehill Safe Lifting Pins can be used to lift individual panels, or two sets can be used in tandem, to lift both gauge panels together for even faster installation, or removal.

To view videos of the Rosehill Safe Lifting Pins in use, please visit www.rosehillrail.com



Anti-Trespass Panels

- » **Rosehill Anti-Trespass panels are designed to deter animals, pedestrians, or metal thieves from accessing the track.**

They will fit any standard gauge rail and sleeper, are easily installed and cannot be accidentally displaced as they fit under the rail and form a complete matrix across the track.

They can be cut to fit if necessary and can be removed for tamping and replaced without damage.

Such is the effectiveness of our Anti-Trespass panels, that they are increasingly being used on platform ends at stations.





Rosehill Rail

ROSEHILL RUBBER RAIL CROSSING PANELS

» ROSEHILL RAIL SALES

Spring Bank Mills
Watson Mill Lane
Sowerby Bridge
West Yorkshire HX6 3BW
United Kingdom

Phone +44 (0)1422 839 456
Fax +44 (0)1422 316 952
Email info@rosehillrail.com
Web www.rosehillrail.com
www.rosehillpolymers.com

All information is correct at time of going to press.

© Rosehill Polymers Limited - 2012.

» An innovative use for Rosehill's crossing panels was to utilise an adjacent rail line to construct a temporary relief road around a rock fall which blocked the only road (A890) to Stromferry in the Scottish Highlands, the only other alternative was a detour of 150 miles. Have you got a challenging situation where we can help?



Rosehill Rail is a Division
of the Rosehill Polymers Group

